

indital usa

WHOLESALE

HARDWARE & ORNAMENTAL COMPONENTS



indital usa

www.indital.com | 713 - 694 - 6055 | 800 - 772 - 4706

CONTENTS

- 1-4 Lockboxes | Canebolts | Gate & Door Closers
- 5-8 Wheels | Rollers | Casters | Track
- 9-11 Sliding Door Track & Roller System
- 12-14 Hinges
- 15-16 Fasteners
- 17-23 Base Plates | Flanges | Caps & Plugs
- 24-25 Rollformed & Structural Channel
- 26-33 Finials | Spears | Caps | Misc Accessories
- 34-35 Shoes | Collars | Columns
- 36 Picket Castings



7947 Mesa Road
Houston, TX 77028

Phone: 713-694-6055 / 800-772-4706

Fax: 713-694-2055

forgings@indital.com

Stay Connected

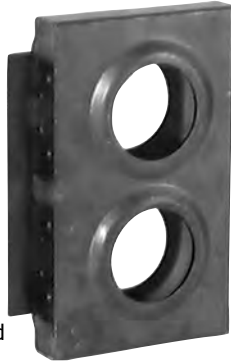


© Indital 2015. All Rights Reserved.

Indital can not guarantee the accuracy of any listings contained herein and therefore assumes no responsibility.

Steel Extra Thin Double Style

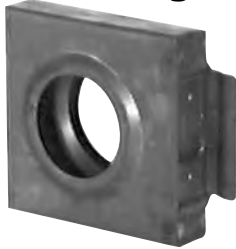
- 1" Wide
- Two 2-1/8" Holes
- Height 7-1/2" x 4-3/8" Wide
- 2-3/8" backset
- Special design fits flush on 1" frame
- Crimped slam guard
- 20 pieces per box



ITEM #	DESCRIPTION
LB218DT	Extra Thin Double Lockbox

Steel Extra Thin Single Style

- 1" Wide
- 2-1/8" Hole
- Height 4-1/4" x 4-1/2" Wide
- Special design fits flush on 1" frame
- 2-3/8" backset
- 40 pieces per box



ITEM #	DESCRIPTION
LB218T	Extra Thin Single Lockbox

Steel 2-3/4" Backset Single Style

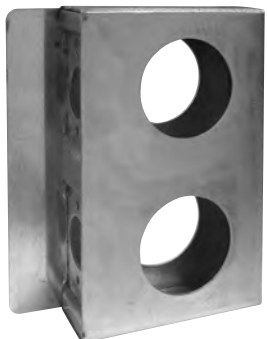
- 1-1/2" wide
- 2-1/8" hole
- 3-5/16" high
- 4-5/16" width with 1" gate stop extension
- 2-3/4" backset



ITEM #	DESCRIPTION
LB218234	Commercial Single Lockbox

Aluminum Double Style

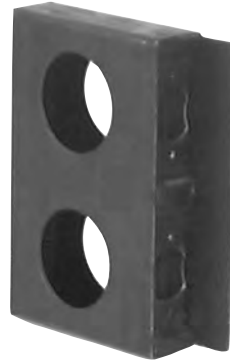
- 1-1/2" wide
- 2-1/8" hole
- 2-3/8" backset
- 4-1/4" wide x 6-3/4" height



ITEM #	DESCRIPTION
LBAC218DT	Alum. Double Style

Steel Standard Double Style

- 1-5/16" Wide
- Two 2 1/8" Holes
- Height 6-3/4" x 4-1/4" Wide
- 2-3/8" backset
- 20 pieces per box



ITEM #	DESCRIPTION
LB218D	Standard Double Lockbox

Steel Standard Single Style

- 1-5/16" Wide
- 2-1/8" Hole
- Height 4-1/4" x 3-1/2" Wide
- 2-3/8" backset
- 40 pieces per box



ITEM #	DESCRIPTION
LB218	Standard Single Lockbox

Mortise Lock Box

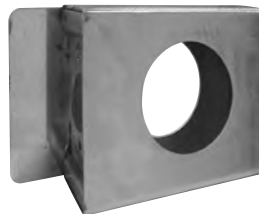
- Height 7-1/4" x 4" x 1" deep
- Available in right or left hand operation
- Perfect fit for Double Cylinder Ornamental Iron Mortise Lockset, Item # MCLGMW23AC on page 74



ITEM #	DESCRIPTION
LB9200L	Left Handed Mortise Lockbox
LB9200R	Right Handed Mortise Lockbox

Aluminum Single Style

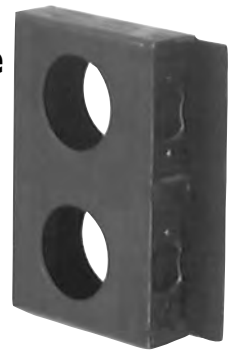
- 1-1/2" wide
- 2-1/8" hole
- 2-3/8" backset
- 4-1/4" wide x 4-1/4" height



ITEM #	DESCRIPTION
LBAC218T	Alum. Single Style

Steel Extra Wide Double Style

- 1-1/2" Wide
- Height 6-3/4" x 4-1/4" Wide
- Two 2-1/8" Holes
- 2-3/8" backset
- 20 pieces per box



ITEM #	DESCRIPTION
LB218DXW	Extra Wide Double Lockbox

Steel Extra Wide Single Style

- 1-1/2" Wide
- Height 4-1/4" x 3-1/2" Wide
- Single 2-1/8" Hole
- 2-3/8" backset



ITEM #	DESCRIPTION
LB218XW	Extra Wide Single Lockbox

Lockbox for SlimLine Locks

- 84" height, can be trimmed to 79-1/4" by installer
- Pre-punched
- 2" x 1" tube
- Perfect fit for Slim-Line Mortise Lockset, Item # MCLH123 on page 74



ITEM #
LB123

We Appreciate Your Business

Weldable Gate Spring Closer



- Size 9" and 12"
- Black finish
- All steel construction
- Mounting screws not included

ITEM #	SIZE	DESCRIPTION
HA9S	9"	Gate Spring
HA12S	12"	Gate Spring



Walk Gate Closer

- Gate capacity: to 120 lbs. and 54"

Both the travel and latching speeds are fully adjustable, ensuring gates close in a controlled manner. Gate will not slam closed.

Features

- Black powder-coated finish
- Mounting screws included
- For metal, wood or vinyl gates or doors
- Complies with most pool gate legislations

ITEM #	DESCRIPTION
HAD200	Walk Gate Closer

Have Questions?

Let Our Experts Help You

800-772-4706

Monday - Friday

8:00 AM - 5:00 PM CST

www.indital.com

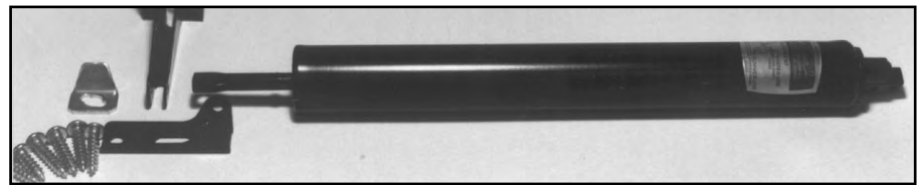
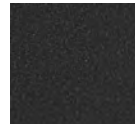
Standard Duty Door Closer



- For interior or exterior doors
- Statuary bronze finish
- Up to 100 lb. door capacity
- Complete with mounting hardware

ITEM #	DESCRIPTION
KW962	Standard Duty Door Closer

Statuary Bronze Finish



Standard Pneumatic Door Closer

- For storm and screen doors
- Complete with mounting hardware

ITEM #	DESCRIPTION
HADC	Pneumatic Door Closer



Made in the USA

Kant Slam Gate Closer

- One year limited warranty
- Hydraulic action – not an air check. Gives ample closing force at latching point while keeping movement smooth
- Installs on side, top, bottom or middle of left or right-hand gate or door
- Easy installation and can be used for indoor or outdoor gates
- Closing pressure is self-contained within the unit
- Adjusting screw on top regulates closing speeds of gate
- No noise or tremendous bang upon impact
- Holds gate open when wanted

ITEM #	DESCRIPTION
HA7	Kant Slam Gate Closer

Economy Cane Bolts

- Plated round bar
- For wood or metal fences



ITEM#	SIZE	LGTH
HA12	1/2"	12"
HA18	1/2"	18"
HA24CB	5/8"	24"

Enclosed Automatic Cane Bolt Lock Pin

- Automatically locks gate when it closes
- For slide or swing gates

Made of heavy steel and brass and can be bolted or welded on.

Specifications

Height: Open: 7-1/8"
 Closed: 8-3/8"
 Open Depth: 2-1/8"
 Closed Depth: 1-3/16"
 Width: 9/16"
 Pin: 3/8" x 1/2"
 Mounting Holes: 1/4"

ITEM #	LENGTH
HAC7110	7-1/8"



Automatic Cane Bolt Lock Pin

- Automatically locks gate when it closes
- For slide or swing gates

Made of coated steel and brass. Studs included for easy installation.

Specifications

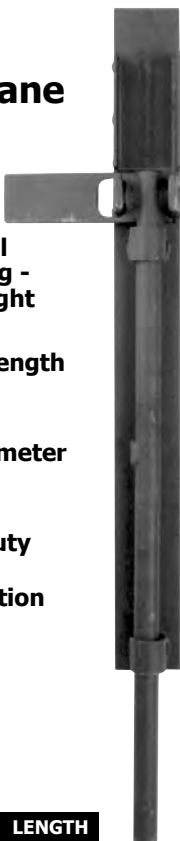
Op. Ht.: 12-1/4"
 Cl. Height: 13-1/4"
 Op. Depth: 2-1/2"
 Cl. Depth: 1-1/4"
 Width: 9/16"
 Pin: 1/2" dia.
 Mntg. Studs: 1"

ITEM #	LENGTH
HAC7100	13-1/4"



Extra Heavy Duty Cane Bolt

- Universal mounting - left or right
- Overall length 20"
- 3/4" diameter bolt
- Heavy duty welded construction



ITEM #	LENGTH
HAGH12320	20"

Mechanical Locking Cane Bolt

- 1/2" diameter
- Mill Finish
- Overall length 22"
- Can be used with standard padlock



ITEM #	LENGTH
HA19CB	22"



Lokk Bolt Lockable Cane Bolt

- Ideal for double-drive gates
- Key-lockable and re-keyable

Quick and simple to install on all gate and fence materials. Clever bolt retention grooves mean this cane-bolt will never drop, drag, bend or grind across driveways!

An optional Base Plate offers added strength to the securing ground hole.

ITEM #	LENGTH
HALB124BXKS	24"
HALBBPBG Base Plate	



Q-Bolt™ Cane Bolt

- Made from high grade stainless steel, polished then powder-coated
- Padlockable
- Limited lifetime warranty

Features include: lock storage, bolt retention to prevent the rod from dropping. The Q-Bolt comes in 24" and 40" lengths with mounting brackets.

Include alignment legs for ease of installation and added strength.

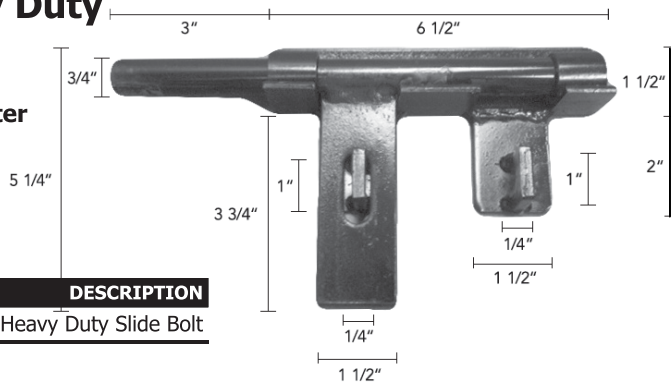
Padlock not included.

ITEM #	LENGTH
HAQB124	24"
HAQB140	40"



Extra Heavy Duty Slide Bolt

- 3/4" bolt diameter
- Black finish
- 9" wide
- 5" high



ITEM #	DESCRIPTION
HA106	Extra Heavy Duty Slide Bolt

Extra-Heavy Safety Hasp

Our most substantial safety hasp. Furnished with fixed plate staple, plus a square hole which allows installation with a carriage bolt, if desired. All steel construction.

Dimensions: 7-1/4" Straight bar

ITEM #	DESCRIPTION
HA26	Extra-Heavy Safety Hasp

Heavy Duty Slide Bolt

- 5-3/4" X 4" overall size
- 1/2" Bolt

ITEM #	DESCRIPTION
HA1	Heavy Duty Slide Bolt

Weldable Light Duty Slide Bolt

- 7" x 2-7/8" overall size
- 3/8" Bolt

ITEM #	DESCRIPTION
HA6	Light Duty Slide Bolt

Safety Chest Hasp

For chests, sliding doors, and other "around-the-corner" installations. Furnished with fixed plate staple. All steel construction.

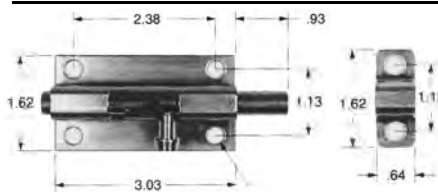
- Size, Length of Slotted Part: 4-1/2"
- Length of Hinge: 2-1/2"
- Length of Pad: 2"
- Width of Joint: 1-1/2"

ITEM #	DESCRIPTION
HA25	Safety Chest Hasp

Slidebolt

- For use with padlock
- 8-5/8" Total length
- 7/16" heavy duty bolt with keeper
- Rust resistant finish

ITEM #	DESCRIPTION
HAC760	Padlockable Slidebolt



Heavy Duty Barrel Bolt Latch

- Thickness: .071
- Bolt diameter: .394

ITEM #	DESCRIPTION
HA704	Heavy Duty Barrel Bolt Latch

Fancy Gate Latch

- Mill Finish



Rugged weldable steel with mounting bracket.

ITEM #	DESCRIPTION
HA57	Fancy Gate Latch

Gravity Gate Latch

- Self-latching

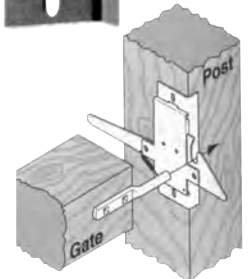
Available with and without mounting holes.



ITEM #	DESCRIPTION
HA4	No Holes - Weldable
HA4WH	With Screw Mounting Holes

Post Latch

- All steel construction



Easy to install for single-acting gates closing flush with a square post up to 6" x 6" (nominal).

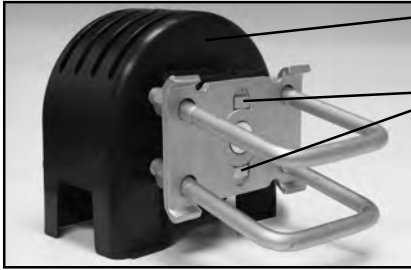
Strike bar installs on "pull" side of gate. "Self-locating" latch case installs on post with slot in latch lever up or down.

Parts are reversible for right-hand or left-hand gates. Latch operates from either side of gate and may be padlocked.

Requires minimum 5/8" gap between gate and post.

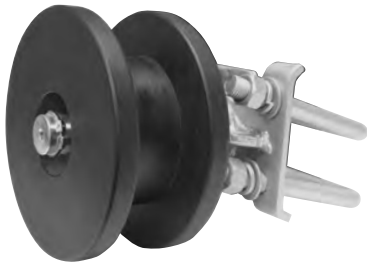
ITEM #	DESCRIPTION
HA15	Post Latch

Premium Heavy Duty Cantilever Gate Rollers



- Includes heavy duty ABS cover to protect rollers and bearings in all weather conditions
- Includes strong magnets to help position the roller when mounting
- New, improved heavy design
- Extreme weather resistance
- Includes heavy duty covers
- Quick mount magnetic base

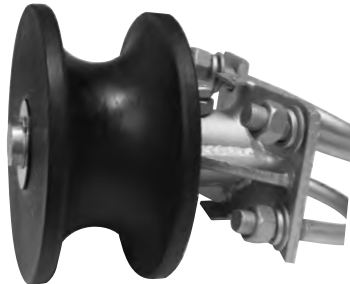
Galvanized metal components for long lasting performance. Machined 7" diameter nylon roller provides smooth operation. Also feature 1-1/8" axles and heavy duty bearings. Heavy duty ABS covers can be mounted on top or bottom.



Square Nylon Gate Roller

- For 2" square gate frame and 4" square post

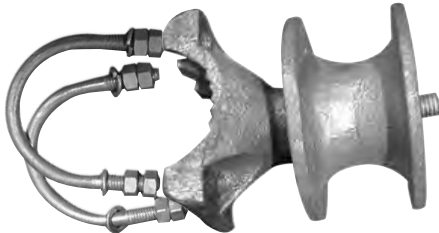
ITEM ID	GATE FRAME	POST SIZE
HA51	2" Square	4" Square



Round Nylon Gate Roller

- For 2-3/8" round gate frame and 4" round post

ITEM ID	GATE FRAME	POST SIZE
HA52	2-3/8" Round	4" Round



Cast Iron Industrial Mini Cantilever Roller

- For 1-5/8" O.D. gate frame
- 2-1/2" O.D. post
- Includes U-bolts for round post

ITEM #	GATE FRAME	FOR POST SIZE
HA31	1-5/8" OD Round	2-1/2" Round



Industrial Ductile Iron Cantilever Gate Roller

- For 3" round O.D. & 4" round O.D.
- 6" wheel and bracket

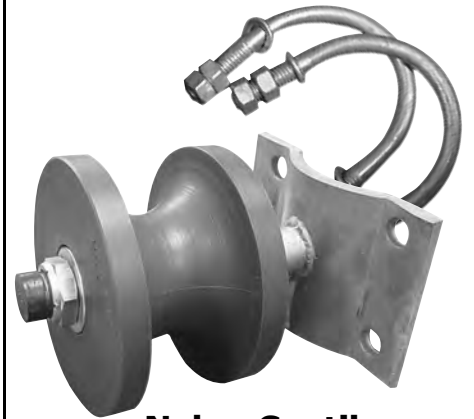
ITEM #	GATE FRAME	FOR POST SIZE
HA32	2-3/8" OD	3" Round O.D.
HA33	2-3/8" OD	4" Round O.D.



General Duty Steel Gate Roller

- 5" wheel
- For 1-5/8" O.D. pipe

ITEM #	FOR POST SIZE
HA20	1-5/8" OD Pipe



Nylon Cantilever Gate Rollers for Round Tube Gate Frame

- Fits 2-3/8" O.D. gate frame
- 6" diameter wheel
- Includes u-bolts for round post

ITEM #	GATE FRAME	FOR POST SIZE
HA55R	2-3/8" OD	3" Round
HA59	2-3/8" OD	4" Round

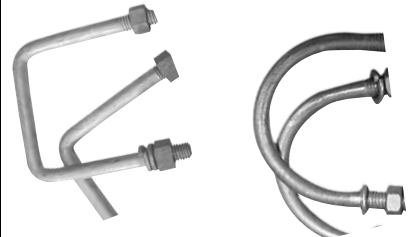
Safety Roller Cover



- For use with the nylon cantilever gate rollers

- All metal construction
- Gate roller not included.

ITEM #	FOR POST SIZE
HA56C	4" Round



Square U-Bolt Set

- Used to mount rollers on square or round posts
- Includes two square U-bolts, washers and nuts

For Cantilever Gate Rollers.

ITEM #	FOR POST SIZE
HA54SQ	4" Square
HA54RD	4" Round



Premium 5-1/2" Steel V-Groove Wheels

- Double sealed bearings
- 1-3/4" width
- 5/8" bolt and nut included
- Plated finish

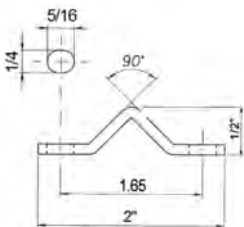
Recommended or use with Steel V-Groove Track HAC293

ITEM #	DESCRIPTION
HAC305V140	5-1/2" Steel V-Groove Wheel



Galvanized Steel V-Groove Track

- 2" width low profile
- 236" long
- Hole spacing is 18" on center
- Galvanized finish
- Can be used with all 4" and larger wheels on this page



If shipping we offer a FREE service to cut track into smaller sections that are more manageable by freight line.

ITEM #	DESCRIPTION
HAC293	Steel V-Groove Track



Premium 4" Steel V-Groove Wheels

- Double sealed bearings
- 1-3/8" width
- 9/16" bolt and nut included
- Plated finish

Recommended or use with Steel V-Groove Track HAC293

ITEM #	DESCRIPTION
HAC305V100	4" Steel V-Groove Wheel

Box For Premium 4" Steel V-Groove Wheels

- Weldable
- 4-3/8" x 3" x 1-1/2" heavy gauge steel



ITEM #	DESCRIPTION
HAC100	Box for 4" V-Groove Wheel



4" Steel V-Groove Wheels

- With mounting bracket
- Heavy duty double sealed bearings
- Mounts on 1" or wider tube frame
- Plated finish

Recommended or use with Steel V-Groove Track HAC293

ITEM #	DESCRIPTION
HAC326V100	4" Steel V-Groove Wheel

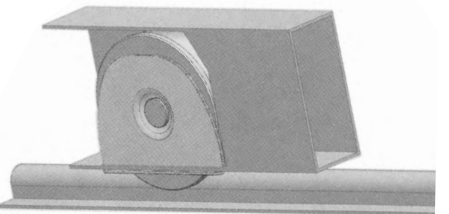


Light Duty 2" Steel V-Groove Wheels

- 3/8" bolt and nut included
- Plated finish

Recommended or use with Steel V-Groove Track HAC293

ITEM #	DESCRIPTION
HAC300D50	2" Steel V-Groove Wheel



4" Steel V-Groove Wheels

- With mounting plates
- Double sealed bearing construction
- Weldable plates allow for easy insertion into 2" wide tube frame
- 1" wide wheel
- 2" total frame width

Recommended or use with Steel V-Groove Track HAC293

ITEM #	DESCRIPTION
HAC333D100	4" Steel V-Groove Wheel



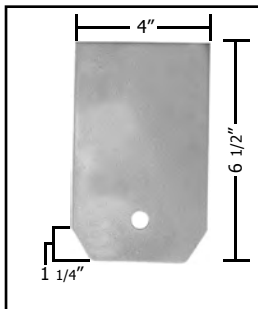
Boxes For "V" Groove Wheels

- All steel construction for easy welding
- 4" box: 2-1/4" wide x 5-1/4" long x 3" Tall
- 6" box: 2-3/4" wide x 7" long x 4-1/8" Tall
- Note: 6" box will only fit 6" cast iron wheel

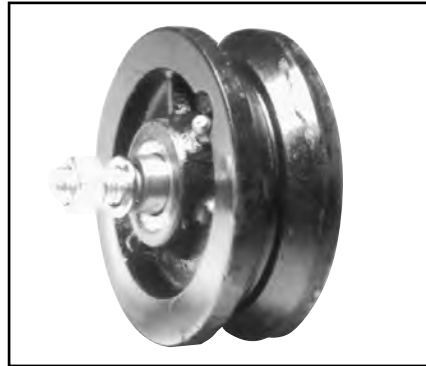
ITEM #	DESCRIPTION
HA21B	4" Wheel Box
HA22B	6" Wheel Box

"V" Groove Wheel Plate

- 1/2" Hole
- Will fit most 4" wheels
- Heavy 3/16" steel



ITEM #	DESCRIPTION
HA39	V-Groove Wheel Plate



Cast Iron "V" Groove Wheels

- Cast iron body
- Grease fitting for easy lubrication
- Roller bearings for easy operation
- Rolls smoothly on ordinary angle iron
- Complete with 1/2" dia. mounting bolt and nut

ITEM #	DESCRIPTION
HA21	4" dia. Cast Iron V-Groove Wheel
HA22	6" dia. Cast Iron V-Groove Wheel



Steel "V" Groove Wheels

- All steel construction
- 4" dia. x 1-3/4" wide
- 6" dia. x 1-3/4" wide
- Sealed bearings (no grease fittings)
- 4" wheels have 3000 lbs. capacity
- 6" wheels have 5000 lbs. capacity
- 4" model includes 1/2" bolt and nut
- 6" model includes 5/8" bolt and nut
- Gold/zinc plating
- Maintenance free

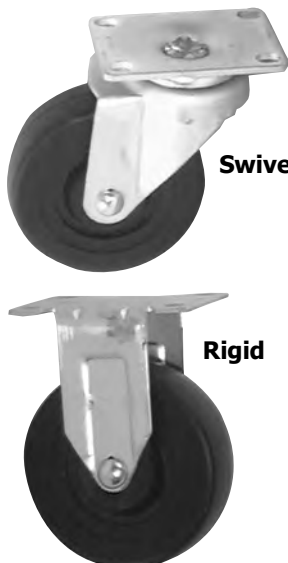
ITEM #	DESCRIPTION
HA40	4" dia. Steel V-Groove Wheel
HA41	6" dia. Steel V-Groove Wheel

Slide Gate "V" Groove Track

- Fits V-groove wheels on this page
- 7/8" H x 4" W
- 14 ga. galvanized steel
- 20 ft. length



ITEM #	DESCRIPTION
HA21TR4	V-Groove Track



Multi-Purpose Casters

- Driveway Gates • Moving Dollie • Tool Carts
- Equipment Racks • Portable Conveyors

ITEM #	WHEEL DIA.	LOAD CAP.	WHEEL MTL.	TOP PLATE
HA2SM	2"	125 lbs.	Metal	Swivel
HA3SM	3"	250 lbs.	Metal	Swivel
HA4SM	4"	350 lbs.	Metal	Swivel
HA212SR	2 1/2"	175 lbs.	Rubber	Swivel
HA3SR	3"	210 lbs.	Rubber	Swivel
HA4SR	4"	300 lbs.	Rubber	Swivel
HA6SR	6"	560 lbs.	Rubber	Swivel
HA2RM	2"	125 lbs.	Metal	Rigid
HA3RM	3"	250 lbs.	Metal	Rigid
HA4RM	4"	350 lbs.	Metal	Rigid
HA212RR	2 1/2"	175 lbs.	Rubber	Rigid
HA3RR	3"	210 lbs.	Rubber	Rigid
HA4RR	4"	300 lbs.	Rubber	Rigid
HA6RR	6"	560 lbs.	Rubber	Rigid

Fully-Pneumatic Wheel Casters

- Available in swivel or rigid style

Maximum protection of floors with good shock absorption.

Wheel size: 8" x 2-1/2"
Plate size: 4-1/2" x 4" x-1/4"

ITEM #	STYLE
HA27	Swivel
HA29	Rigid





Roller Guides

- Smooth rubber cylinder
- Sturdy metal bracket

For smooth operation of sliding gates and doors. Rollers are permanently mounted in bracket.

ITEM #	ROLLER LENGTH
HA34	3"
HA35	6"
HA36	12"

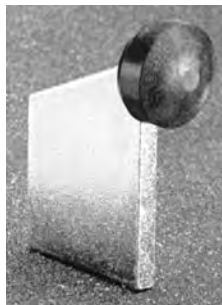


Nylon Roller Guide

Small - 1" diameter
2-3/4" Length

Medium - 1-1/2" diameter
3" Length

ITEM #	SIZE
HAC243D25	Small
HAC243D40	Medium



Weldable Gate and Door Stop

4-1/2" Tall
3-1/2" Wide

ITEM #
HAC200G

Gate-Stop Gate Alignment Device

- Black

Molded from high-strength polymer materials, it is guaranteed against rust, distortion and staining. An integrated rubber buffer protects against 'gate slam' and reduces noise.



ITEM #	APPLICATION
HITCGS1	Vinyl Gates
HITCGS2	Wood/Vinyl Gates
HITCGS3	Metal Gates



Premium Roller Guides

- Rubberized UV Protected Hard Plastic
- Rollers are removable and replaceable

Zinc plated bracket can be bolted or welded on. Sealed bearings for smooth rolling. For sliding gates and doors.

ITEM #	COLOR	ROLLER LENGTH
HA35XBLK	Black	6"
HA35XWHT	White	6"



Brass Roller

- 3" High
- 1-1/4" Dia.

ITEM #
HAC227



Multi-Purpose Solid Rubber Tire

- 8" diameter
- 1-3/4" wide
- 5/8" Bore

Axle not included.

ITEM #
HA37RT

Gate Spring Roller

- Height: 16-3/4"
- Heavy Duty Spring
- Mill finish
- 3" Swivel Caster with bearing

ITEM #
HA16



Roller Guides

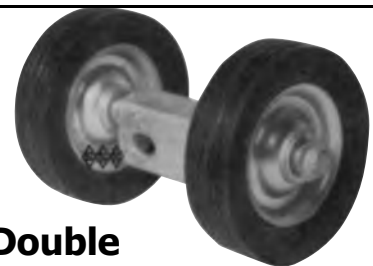
- Adjustable for gate frames up to 3-3/4" wide

Heavy duty plated bracket can be bolted or welded to gate post to allow smooth straight running of slide gates. White nylon rollers stand up to the harshest conditions. Both rollers are positionable for precise adjustment.

Specifications

Bracket Dimensions: 1-3/4" x 7-1/8" x 3-1/2"
Bracket Thickness: 1-4"
Rollers Dimensions: 1-3/16" dia x 1-1/2"
Bolt Holes: 3/8" x 9/16" oblong

ITEM #
HAC2120



Double Wheel Gate Carrier

- 6" Solid rubber tires

ITEM #	WHEEL SIZE
HA19	6"

Heavy Duty Spring Gate Casters

- 6" wheel

For use on gates and sliding or rotating doors to provide shock absorption over uneven surfaces. The compression spring helps support the weight of the gate/door.

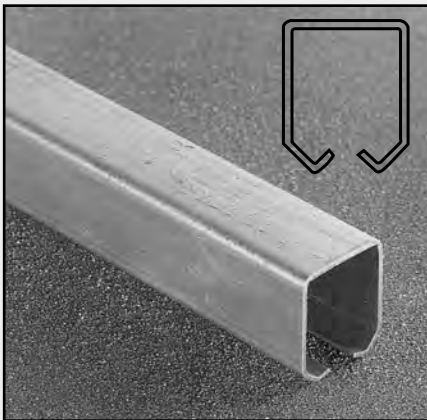
Wheel is 6" solid polyurethane elastomer which is not affected by grease, oils and most chemicals and is highly abrasion resistant.

The 4" x 11" heavy duty mounting bracket is constructed from 5/16" steel with 7/16" mounting holes.



ITEM #	TRAVEL
HA16HD	1"

Premium Quality Sliding Door Track & Roller System



Premium Galvanized Track

- 236" length
- Dimensions: 1-3/4" wide by 2-1/8" high
- Weight is 42 lbs.

ITEM #
HAC24

Two Wheel Trolley

- Forged body
- Steel wheels with heavy duty bearings.
- Sold individually.

ITEM #
HAC2C



Two Wheel Trolley with Wing Hinge

- Forged body
- Steel wheels with heavy duty bearings.
- Sold individually.

ITEM #
HAC14C



Two Wheel Turning Trolley

- Forged body
- Steel wheels with heavy duty bearings.
- Sold individually.

ITEM #
HAC8C



Bottom Roller Guide

- With brass roller

ITEM #
HAC36



This Premium Quality Sliding Door Track & Roller System works with items in this shaded section of this page only.

Four Wheel Trolley

- Forged body

Steel wheels with heavy duty bearings. Sold individually.

ITEM #
HAC4C



Four Wheel Trolley with Wing Hinge

- Forged body

Steel wheels with heavy duty bearings. Sold individually.

ITEM #
HA20C



Premium Overhead Trolleys

- These premium overhead trolleys work with standard sized I-beams.

3" Overhead Trolley

- With 2-1/2" drop
- Fits 3" or 4" I-beams

Comes complete with standard H attachment and bolts. Features; Forged carbon steel brackets, standard triple labyrinth seal construction, rugged 2-bolt attachment connection, pressure type grease fittings and the trolley wheels are riveted to the bracket.

SPECIFICATIONS

Trolley Center Spacing: 6" min./ 36" max.
Single Trolley Load Capacity: 200 lbs.

ITEM#	DESCRIPTION
HATA3	3" Overhead Trolley

4" Overhead Trolley

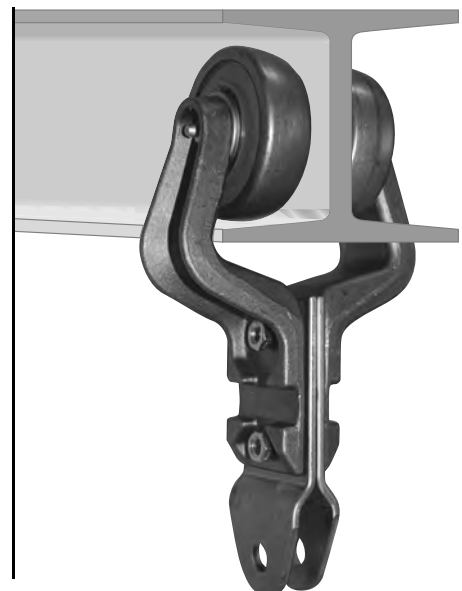
- With 3-3/16" drop
- Fits 5" or 6" I-beams

Comes complete with standard H attachment and bolts. Features; Forged carbon steel brackets, standard triple labyrinth seal construction, rugged 2-bolt attachment connection, pressure type grease fittings and the trolley wheels are riveted to the bracket.

SPECIFICATIONS

Trolley Center Spacing: 8" min./ 32" max.
Single Trolley Load Capacity: 400 lbs.

ITEM#	DESCRIPTION
HATA5	4" Overhead Trolley



Face Mount Sliding Door Track Bracket

- Made from galvanized steel

ITEM #
HA301B



Double Track Bracket

Especially intended for metal buildings, this bracket can be welded, bolted, or screwed in place. For HA 301 track.

ITEM #
HA301B22



Adjustable Face Mount Track

Adjustable face-mount bracket has two mounting holes for 3/8" lag screws or bolts. Especially appropriate for metal buildings. For HA 301 track.

ITEM #
HA301B12



Stay Roller

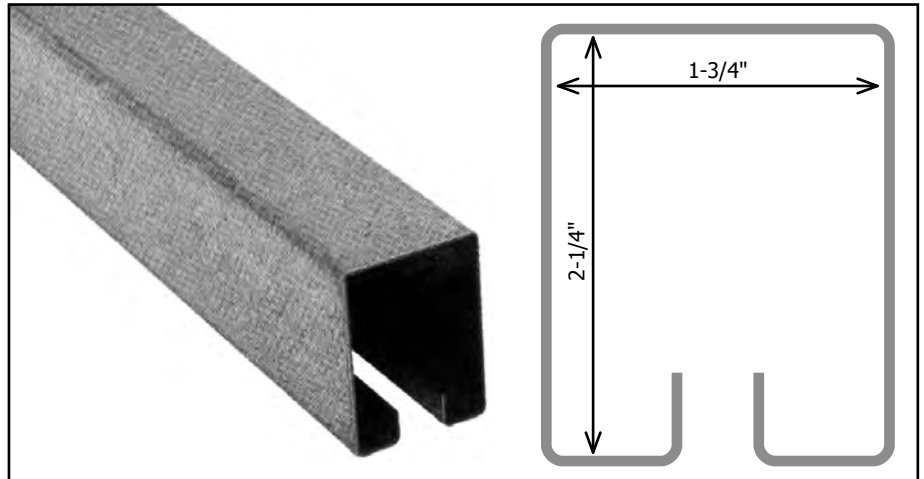
Extra-heavy duty stay roller takes abuse! Fabricated from 3/16" zinc plated steel, adjusts from 1" to 3 3/4"

for wide range of door widths. Non-marking plastic wheel mounted on sturdy 1/2" bolt. Offset slots allow full contact with door.

ITEM #
HA301B40



Sliding Door Track & Roller System



Standard Duty Sliding Door Track

- Galvanized steel trolley track
- Max. capacity 400 lbs.
- Stocked in 12' and 24' lengths

ITEM # **LENGTH**
HA301 24 feet



Trolley Wheels

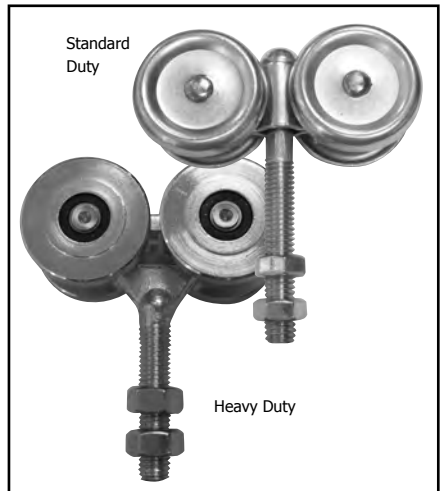
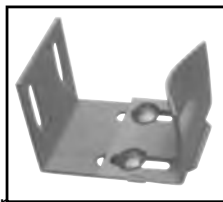
- Steel bearings
- Used in conjunction with sliding door track above. Steel bearings for smooth operation and long life. Sold in set of two hangers.

ITEM #
HA303W

Adjustable Door Guide/Stop

Ideal for corrugated metal-clad doors, this adjustable guide may be expanded in width for doors from 2-1/2" to 6" thick. Curved surface gives natural lead-in. This door guide also mounts sideways for use as a stop. Easy to install, available in powder coated white finish.

ITEM #
HA301B50



Trolley Wheels

- Now available in a NEW Heavy Duty Model
- Used in conjunction with sliding door track above

For metal frame doors, iron gates and conveyor lines.

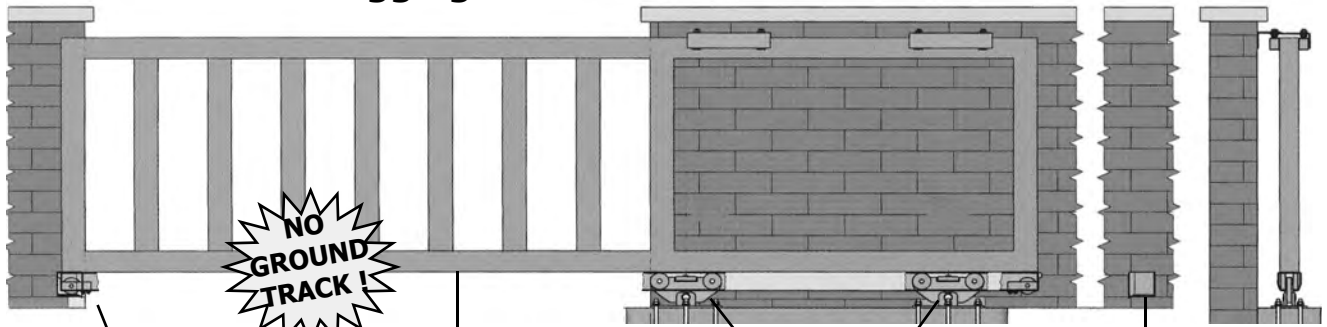
Sold in sets of two hangers.

ITEM # **DUTY RATING**
HA302 Standard Duty
HA306H Heavy Duty

This Sliding Door Track & Roller System works with items on this page only.

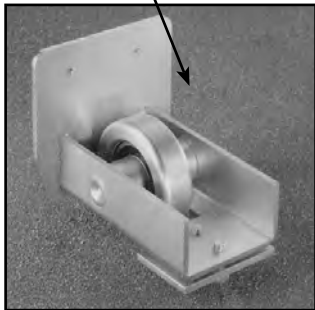
Heavy and Medium Duty Rolling Cantilever Gate System

- No More Digging!
- No More Ground Track!



NO GROUND TRACK!

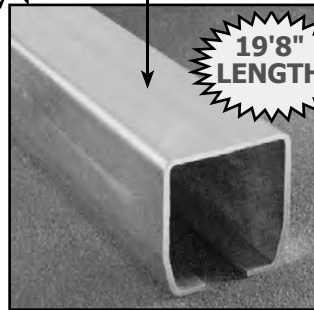
19'8" LENGTH



End Wheel

- With full sealed bearing construction
- Acts as a stopper and support for large openings

ITEM #	DUTY	CAPACITY
HAC347P	Heavy	2,200 lbs.
HAC347PM	Medium	1,200 lbs.



Galvanized Guide Track

- 236" foot length
- Runs entire bottom of gate roller

Heavy Duty Components

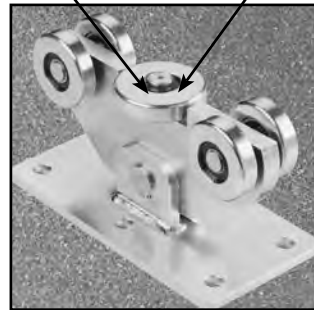
- 3-1/2" High x 4" Wide
- Track base: 2-5/8"
- Track Opening: 1-5/16"
- Material Thickness: 3/16"

ITEM #	DUTY	CAPACITY
HAC345P	Heavy	2,200 lbs.

Medium Duty Components

- 2-11/16" H x 2-11/16" W
- Track Base: 1-7/8"
- Track Opening: 15/16"
- Material Thickness: 1/8"

ITEM #	DUTY	CAPACITY
HAC345M	Medium	1,200 lbs.



Gate Rollers

- With full sealed bearing construction
- Supports gate and operation

Heavy Duty Components

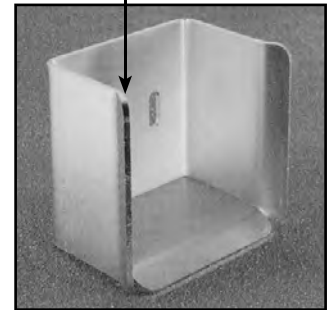
- 6-1/2" H x 5-7/8" W x 9-3/8" L

ITEM #	DUTY	CAPACITY
HAC350P	Heavy	2,200 lbs.

Medium Duty Components

- 5-1/8" H x 4-5/16" W x 6-11/16" L

ITEM #	DUTY	CAPACITY
HAC350M	Medium	1,200 lbs.



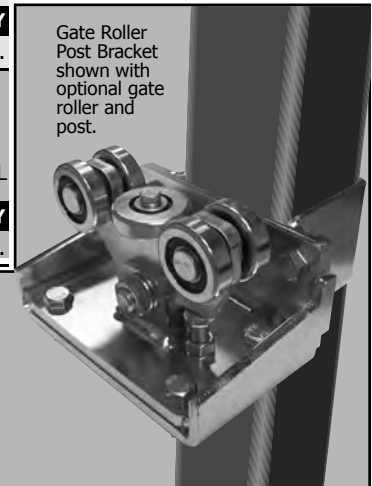
End Cap

- With full sealed bearing construction
- Acts as a stopper and support

ITEM #	DUTY	CAPACITY
HAC346P	Heavy	2,200 lbs.
HAC346M	Medium	1,200 lbs.

How it works:

The carriages, 2 of same size, are spaced apart and anchored. As opening and weight increase, so does the space between the carriages. The gate is attached to a track, which is guided by both the carriages and supporting roller guides.



Gate Roller Post Bracket shown with optional gate roller and post.

Gate Roller Post Mounting Bracket

- For 4" posts
- For medium duty gate rollers only
- Made from 5/16" steel plate, zinc-plated

Attaches cantilever gate rollers to 4" post. Includes roller bracket, post bracket, bolts, lock washers and nuts.

ITEM #	DESCRIPTION
HAC304M102Q	Roller Bracket



Decorative Barrel Hinges

- Weldable
- Brass bushing

Decorative cast iron hinge is ready to be welded to your iron gate.

Sold individually

Specifications

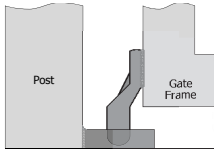
Small

Height: 4-3/8"
Width: 3/4"
Pin: 7/16" dia. x 1"

Large:

Height: 6-1/4"
Width: 1-3/8"
Pin: 5/8" dia. x 1-1/2"

ITEM #	SIZE
HIC5901	Small
HIC5903	Large



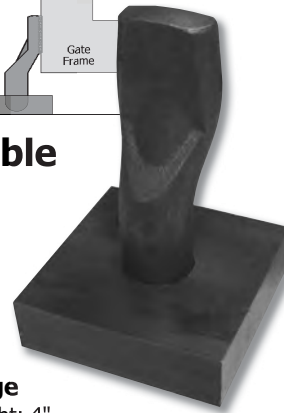
Weldable Pivot Hinge Set

- Heavy duty, economy hinge

Overall Height: 4"
Overall Width: 2-1/2" sq.
Pin: 7/8" dia. x 3-7/8" length
Base: 2-3/4" x 2-3/4" x 3/4" thick
Base plate is machined from solid steel.
Hinge pin is weldable cast iron.

Sold individually

ITEM #	DESC.
HIC4012	Pin
HIC4042	Base

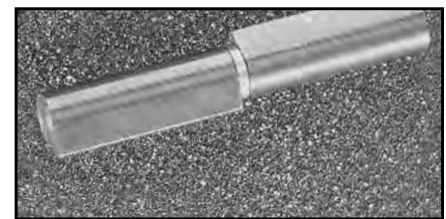


Heavy Duty Steel Hinges

- For uphill swing up to 15°
- Also for extra heavy gates weighing up to 1 ton

Features include: 3" x 10" x 1/2" thick weldable plates, bronze bearings and a 3/4" diameter steel hinge bolt. Black painted finish. Sold as pair.

ITEM #	OVERALL SIZE	DESCRIPTION
HI775	11-1/2" x 8"	Uphill Gate Hinges



Tear Drop Weldable Hinge

- Forged pin and brass bushing
- Sold individually. Available in three sizes:

1/2", 5/8", 3/4" barrel diameter

ITEM #	LENGTH	BARREL DIA.
HIC4904	1-1/2"	1/2"
HIC4908	3"	5/8"
HIC4914	5-1/2"	3/4"



Bat Wing Clips

- Weldable non-adjustable hinges
- Quick and easy weld on hinges are easy to attach to gates and posts. **Sold individually.**

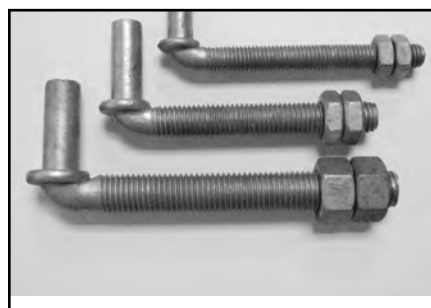
ITEM #	PIN/HOLE	DESCRIPTION
HA5M	1/2"	Male Bat Wing Clip
HA5	1/2"	Female Bat Wing Clip



Steel Barrel Hinges

- Machined from round bar
- Designed for gates and doors
- Weldable
- Sold in pairs

ROUND BAR	CAPACITY
BHXS 2"	5/8" 75 lbs.
BHS 3"	3/4" 100 lbs.



Adjustable Gate Hanger Bolt

- With two nuts
- Galvanized finish
- 1/2" bolt can be used with female bat wing hinge above

Sold individually

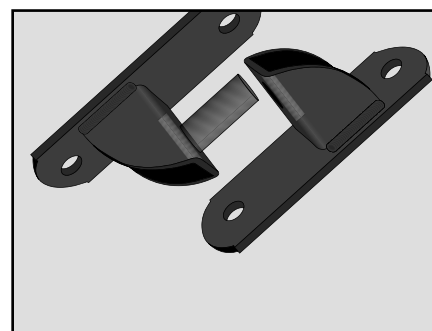
ITEM #	PIN DIA.	PIN HT.	LENGTH
HA2	1/2"	1-1/2"	4-1/2"
HA258	5/8"	1-9/16"	4-1/2"
HA234	3/4"	1-3/4"	6"

Decorative Small Barrel Hinge

- 1/2" dia.
 - 3-7/8" H
 - 5/16" Pin
 - Wt. .25 lb.

Sold individually

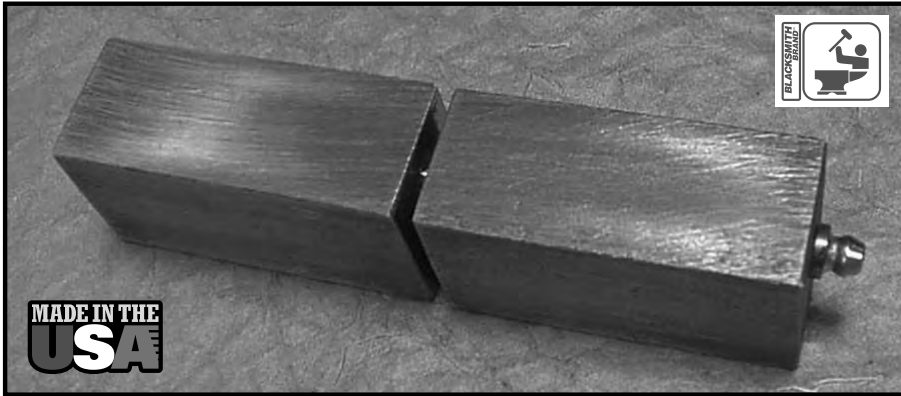
ITEM #	DESCRIPTION
SF170B4	Decorative Barrel Hinge



Economy Bolt-On Bat Wing Gate Hinges

- 1/2" diameter pin for strength
- Black powder-coated finish
- Sold individually
- Female can be used with Gate Hanger Bolt (HA2) to the left or the bat wing clips above

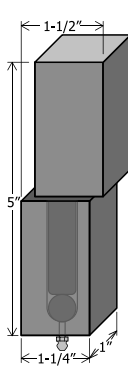
ITEM #	DESCRIPTION
HA5WTM	Male Bolt-On Bat Wing Hinge
HA5WTF	Female Bolt-On Bat Wing Hinge



Blacksmith Brand™ Medium 5" Gate Hinges

- Made in the USA
- Up to 300 lb. gate capacity per set

Each part machined from one piece of cold finish steel. Grease fitting for easy lubrication. Ball bearing for smooth operation. Easy weld-on installation. **Priced and sold in sets of two hinges.**

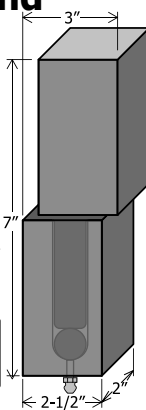


ITEM #	DESCRIPTION
BHM	Medium 5" Weldable Gate Hinge

Blacksmith Brand™ Extra Large Gate Hinges

- Made in the USA
- Up to 2500 lb. gate capacity per set

Each part machined from one piece of cold finish steel. Grease fitting for easy lubrication. Ball bearing for smooth operation. Easy weld-on installation. **Priced and sold in sets of two hinges.**



ITEM #	DESCRIPTION
BHXL	Extra Large Weldable Gate Hinges

For More Than 20 Years Blacksmith Brand™ Weldable Gate Hinges Set the Standard!

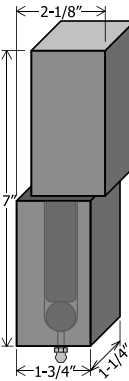
All are built to last with high-quality machined steel construction. Easy to lubricate with built-in grease fittings. Just weld one piece to the post and the other to the gate and you're done.



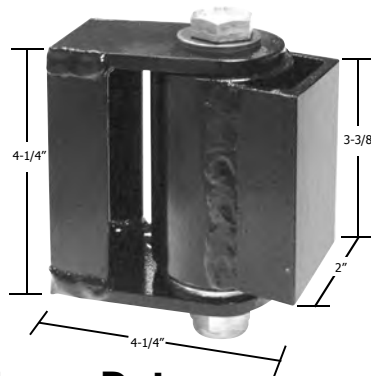
Blacksmith Brand™ Large 7" Gate Hinges

- Made in the USA
- Up to 1000 lb. gate capacity per set

Each part machined from one piece of cold finish steel. Grease fitting for easy lubrication. Ball bearing for smooth operation. Easy weld-on installation. **Priced and sold in sets of two hinges.**



ITEM #	DESCRIPTION
BHL	Large 7" Weldable Gate Hinge



Heavy Duty Roller Bearing Hinge

- Sealed roller bearings are maintenance free, no lubrication required
- 2000 lb. capacity per pair

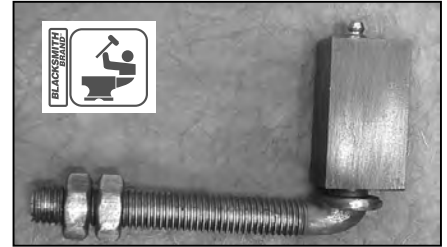
For high-traffic and heavy-duty gates where strength and durability are needed. Manufactured in the US with the highest quality construction and materials.



SOLD IN PAIRS

SPECIFICATIONS
 4-1/4" high x 2" wide 2-1/4" barrel diameter
 4-1/4" gate clearance 10-1/2 lbs. per pair

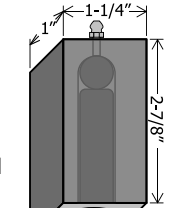
ITEM #	DESCRIPTION
BHG9	Heavy Duty Roller Bearing Hinges



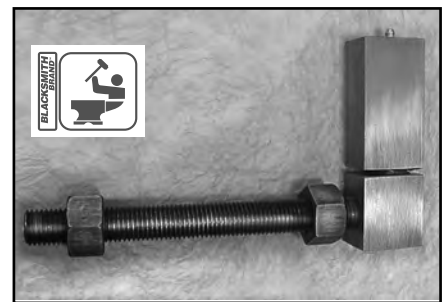
Blacksmith Brand™ Medium Adjustable Hinge

- Made in the USA
- Up to 500 lb. gate capacity per set

Block is machined from cold finished steel bar. Grease fitting for easy lubrication. Ball bearing for smooth operation. 5/8" J-Rod provides 4" of gate adjustability. **Priced and sold in sets of two hinges.**



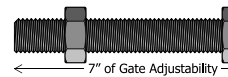
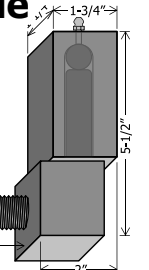
ITEM #	DESCRIPTION
BHMADJ	Medium Adjustable Gate Hinge



Blacksmith Brand™ Large Adjustable Hinge

- Made in the USA
- Up to 900 lb. gate capacity per set

Block is machined from cold finished steel bar. Grease fitting for easy lubrication. Ball bearing for smooth operation. 7/8" diameter alloy threaded rod provides up to 7" of gate adjustability. **Priced and sold in sets of two hinges.**



ITEM #	DESCRIPTION
BHLADJ	Large Adjustable Gate Hinge

Adjustable Gate Hinge with Plate and Lock Nut

4" X 4" Bolt on plate with 7/16" holes

Adjustable 3/4" hanger bolt

Sold individually



ITEM #

HAC163

Adjustable Hinge with Weldable Wing

2-1/2" weldable bracket 1/2" bolt.

Adjusts from 2" to 2-1/2" from end of bracket

3-7/8" high

Sold individually

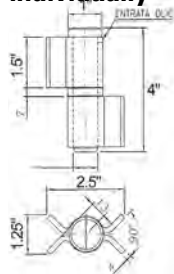


ITEM #

HAC90G

Large Hinge with Removable Pin

Sold individually



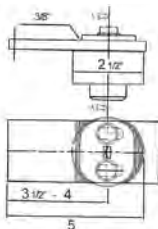
ITEM #

HAC440

Fully Adjustable Hinge with Bearing

3-1/2" to 4" adjustment

Sold individually



ITEM #

HAC86G

Adjustable Hinge with Weldable Wing

2-1/2" weldable bracket 1/2" bolt.

Adjusts from 2" - 2-1/2" from end of bracket

4" X 4" bolt on plate with 7/16" holes

Sold individually



ITEM #

HAC946



Plug Hinge with Right and Left Wings

- Halves are removable
- Pin is fixed on one side
- Sold individually

4-3/8" Tall
2-5/8" Wide
11 ga. Thickness
3/8" Pin

8-1/2" Tall
4-5/8" Wide
3/16" Thickness
1/2" Pin

ITEM # **HAND**

HIC430100L Left

HIC430100R Right

ITEM # **HAND**

HIC430200L Left

HIC430200R Right



Base Plate Hinge with Thrust Bearings

- Sold individually

1-1/2" High

2-5/8" Dia.

ITEM #

HAC87G



Extra Large 180° Weldable Hinge - Fully Adjustable

2 sizes available
Sold individually

Standard Duty

1/2" threaded bolt with 1/4" thick weld plates

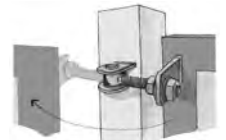


ITEM #

HAC17812

Extra Heavy Duty

1" threaded bolt with 1/2" extra thick weld plates



ITEM #

HAC17824

* Allows door to be opened 180°



Adjustable Hinge

- For Use in concrete or stone

• 1" diameter adjustable sleeve • 3/4" bolt

ITEM #

HAC140M18



Adjustable Hinge

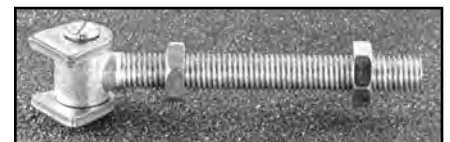
- Weldable Bushing

• 1" diameter weldable bushing

• 3/4" diameter bolt

ITEM #

HAC135M18

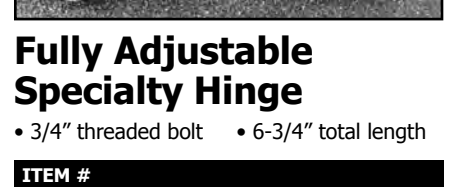


Fully Adjustable Specialty Hinge

• 3/4" threaded bolt • 6-3/4" total length

ITEM #

HAC150M18



Hex Head Lag Screws

- Type A
- Hardened

ITEM #	SIZE
HL141	1/4" x 1"
HL14112	1/4" x 1-1/2"
HL142	1/4" x 2"
HL143	1/4" x 3"
HL5161	5/16" x 1"
HL5162	5/16" x 2"
HL5163	5/16" x 3"
HL5164	5/16" x 4"
HL382	3/8" x 2"
HL383	3/8" x 3"
HL384	3/8" x 4"



Power Drivers for Hex Lag Screws

ITEM #	DESCRIPTION
PB14H	Driver for 1/4" Screws



Lag-Shield

- Use in mortar joint or concrete
- Use with: Lag bolt
- Made of: Zinc alloy
- Size range: 1/4" short to 3/4" long
- Hole spotting required
- Rustproof
- Short style for hard masonry
- Long style for soft masonry

In mortar joints, install the anchor to expand against the brick or block. Drill hole, insert anchor until flush with surface. Position fixture, insert lag bolt and tighten.

ITEM #	SIZE
RA1051	1/4" Short
RA1055	1/4" Long
RA1101	5/16" Short
RA1105	5/16" Long
RA1151	3/8" Short
RA1155	3/8" Long

One-Way Lag Screws

- Threaded full length
- Hardened, Type A
- Black finish
- Can be installed with screwdriver or Power Bit



ITEM #	SIZE
OW14112	1/4" x 1-1/2"
OW142	1/4" x 2"
OW14212	1/4" x 2-1/2"
OW143	1/4" x 3"
OW5162	5/16" x 2"
OW5163	5/16" x 3"



One Way Driver Bits

- For fast installation of one-way screws

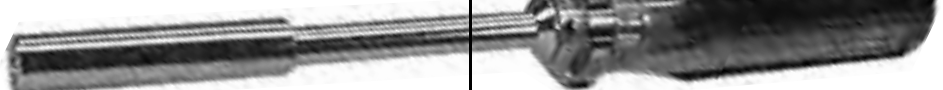
ITEM #	DESCRIPTION
PB14	Small driver for 1/4" screws
PB516	Large driver for 5/16" screws



Magnetic Bit Holder

For Torx or other bits. Bits not included.

ITEM #	DESCRIPTION
PA93551	1/4" Magnetic Bit Holder

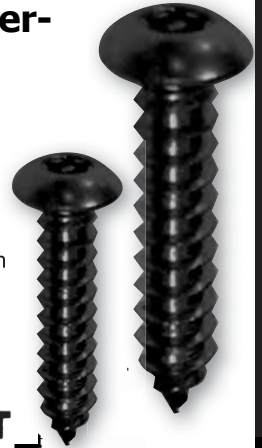


Hand Bit Driver

For Torx or other bits. Bits not included.

Torx Tamper-Resistant Screws

- Simple to install
- Can only be removed with installation tool
- Threaded full length
- Black finish



TORX TAMPER-RESISTANT

ITEM #	SIZE
TX14112	1/4" x 1 1/2"
TX142	1/4" x 2"
TX143	1/4" x 3"



Security Torx Driver Bit

Used with bit holder for installation of Torx tamper-resistant screws.



ITEM #	DESCRIPTION
PBT40	T40 Torx Bit



ITEM #	DESCRIPTION
PB14HD	1/4" Hand Bit Driver

All-Thread Rod

- Plated
- Length - 36 inches

SIZE 3/8"	ITEM #
Rod	HLAT383
Nut	HLAT38N
Washer	HLAT38W

SIZE 1/2"	ITEM #
Rod	HLAT123
Nut	HLAT12N
Washer	HLAT12W

SIZE 5/8"	ITEM #
Rod	HLAT583
Nut	HLAT58N
Washer	HLAT58W

SIZE 3/4"	ITEM #
Rod	HLAT343
Nut	HLAT34N
Washer	HLAT34W



Projection Clips

- For screens or storm window panel
- Will not rust, are corrosion resistant
- Screws not included



ITEM #	SCREW SIZE	DESCRIPTION
HL5003	#10	Black 5/16" Wing Clip
HL5002	#8	Black 3/8" Wing Clip



Phillips Pan Head Screws

- Black finish

ITEM #	SIZE
HL903	#8 x 1-1/4"
HL905	#10 x 1"
HL908	#10 x 2"



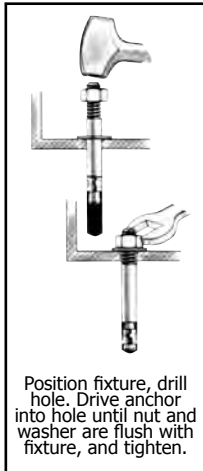
Wedge Expansion Anchor

• Designed for consistent performance in cracked and uncracked concrete

- Use in concrete, brick, stone
- No other fastener needed
- Made of: Steel
- Size Range: 1/4" x 1-3/4" to 5/8" x 8-1/2"

A one-piece anchor bolt made of low carbon steel.

- No hole spotting
- UL listed
- Patented interlocking wedges
- 17 diameters and lengths, other sizes on special order



Position fixture, drill hole. Drive anchor into hole until nut and washer are flush with fixture, and tighten.

SIZE

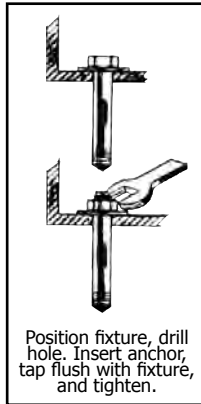
RA7400	1/4" x 1-3/4"
RA7402	1/4" x 2-1/4"
RA7404	1/4" x 3"
RA7410	3/8" x 2-1/4"
RA7412	3/8" x 2-3/4"
RA7414	3/8" x 3-1/2"
RA7416	3/8" x 5"
RA7420	1/2" x 2-3/4"
RA7422	1/2" x 3-3/4"
RA7423	1/2" x 4-1/2"
RA7424	1/2" x 5-1/2"
RA7426	1/2" x 7"
RA7430	5/8" x 3-1/2"
RA7432	5/8" x 4-1/2"
RA7434	5/8" x 6"
RA7436	5/8" x 7"
RA7438	5/8" x 8-1/2"



Sleeve Expansion Anchor

• Ideal for concrete, brick and block
• A single unit sleeve anchor made of carbon steel

Designed to draw the fixture in tight against the base material through the action of its compression ring. This helps to increase the resistance of the anchor to loosening when subjected to vibrating loads. The nylon compression ring will compress if necessary, so that the fixture is tightly secured against the base material. Under load, the tapered plow bolt is drawn further into the expansion sleeve to develop increased locking action against the walls of the hole.

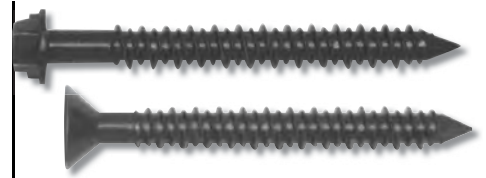


Position fixture, drill hole. Insert anchor, tap flush with fixture, and tighten.

FEATURES AND BENEFITS

- Fits standard fixture holes – No need to undersize anchors for proper fit
- Immediate Loading – Minimizes downtime
- Sleeve has 360° contact area and reduces concrete stress

ITEM #	SIZE
RA5005	5/16" x 1-1/2"
RA5010	5/16" x 2-1/2"
RA5015	3/8" x 1-7/8"
RA5020	3/8" x 3"
RA5025	1/2" x 2-1/4"
RA5030	1/2" x 3"
RA5034	1/2" x 4"
RA5035	5/8" x 2-1/4"
RA5040	5/8" x 4-1/4"
RA5045	5/8" x 5-3/4"
RA5050	3/4" x 2-1/2"
RA5055	3/4" x 4-1/4"
RA5060	3/4" x 5-3/4"



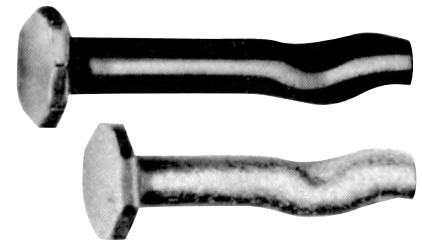
Tapper™ Concrete Anchor Screws



- Available in hex head or Phillips flat head
- The screw is the anchor, no need for additional mounting hardware
- Drill bit included with box of 100

Just drill a hole and insert anchor screw to fasten objects in concrete, block and brick. Designed for medium duty applications. Perma-Seal™ coated carbon steel.

ITEM #	SIZE	HEAD	BOX QTY.
RA2724	1/4" x 2-1/4"	Hex Head	100
RA2728	1/4" x 3-1/4"	Hex Head	100
RA2732	1/4" x 4"	Hex Head	100
RA2764	1/4" x 2-1/4"	Phillips Flat	100
RA2768	1/4" x 3-1/4"	Phillips Flat	100
RA2772	1/4" x 4"	Phillips Flat	100
RA2776	1/4" x 6"	Phillips Flat	100



Short Spike

- No layout or hole-spotting required
- One-piece anchor
- Zinc electroplated (meeting ASTM B-633)
- Fast "Drill 'n Drive" installation



The spike is used to fasten wood, metal and insulation to various masonry materials. The one-piece anchor is made of high grade tempered carbon steel. It is vibration-resistant and installation is quick and easy. Drilled hole depth is not critical. The spike holds tightly even under vibratory loads in a "bottomless" hole.

Use in concrete, dense brick, stone
No other fastener needed
Made of: high grade carbon steel



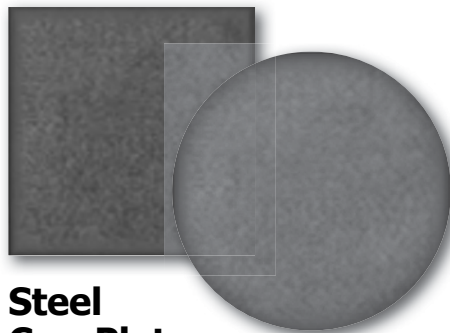
ITEM #	SIZE
RA3762	1/4" x 1 1/2"
RA3764	1/4" x 2"
RA3768	1/4" x 3"

Zamac Nailin

- No hole spotting
- One piece
- Use in concrete, block, brick, stone
- Use with: No other fastener needed
- Made of zinc with steel nail



ITEM #	SIZE
RA2808	1/4" x 1"
RA2814	1/4" x 1-1/4"
RA2820	1/4" x 1-1/2"
RA2826	1/4" x 2"



Steel Cap-Plates

• Sheared from 1/8" steel plate

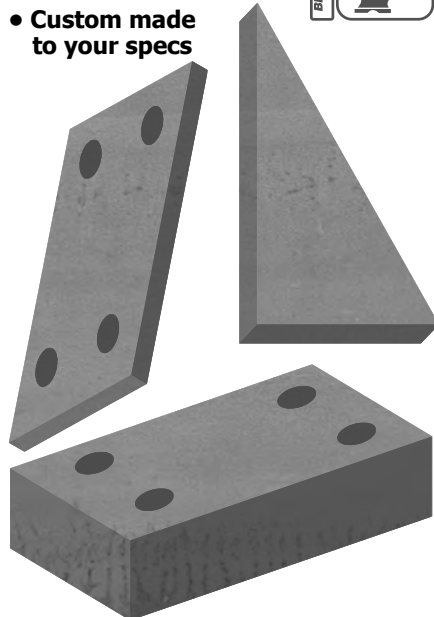
- Excellent for capping ends of tubing
- Economical and time saving
- Many stock sizes
- We custom shear & punch all size plates. Please inquire with our sales department.



ITEM #	SIZE
WTCP2	2" x 2" Square
WTCP212	2-1/2" x 2-1/2" Square
WTCP3	3" x 3" Square
WTCP4	4" x 4" Square
WTCP6	6" x 6" Square
WTCP32	3" x 2" Rectangle
WTCP42	4" x 2" Rectangle
WTCP64	6" x 4" Rectangle
WTCP178R	1-7/8" Round
WTCP238R	2-3/8" Round

Steel Gussets and Base Plates

• Custom made to your specs



2-5/8" x 1-1/2"
1/4" Mounting Holes
1/2" Square ID
3/32" Thick

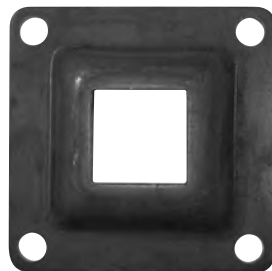


ITEM #	FITS	OVERALL DIMS.
WT110	1/2"	2-5/8" x 1-1/2"



3/32" Thick
11/32" Mounting Holes

ITEM #	FITS	OVERALL DIMS.
WT127	3/4" sq. Tube	3-1/4" sq.

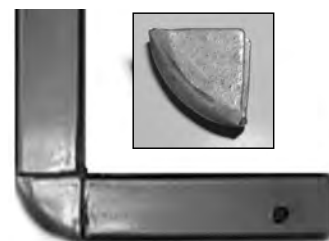


Raised Square Flanges

• 1/8" Thick
7/16" mounting holes

ITEM #	FITS	OVERALL DIMS.
WT8041	1" sq. Tube	4" sq.
WT135	1-1/4" sq. Tube	4" sq.
WT8047	1-1/2" sq. Tube	4" sq.
WT137	2" sq. Tube	5-1/4" sq.
WT8049	2-1/2" Tube	5" sq.

See Page 106 for more Flanges and Flange Covers.



1" Tubing Corner

ITEM #
SC1C



2-3/4" x 1" Weld Tab

• 3/8" Hole
• 3/16" Thick

ITEM #
WT300



3-1/2" x 1" Weld Tab

• 3/8" Hole
• 5/32" Thick

ITEM #
WT217



2-3/8" x 1" Weld Tab

• 3/4" x 1/4" Oblong Hole
• 1/8" Thick

ITEM #
WT132

2" 90° Weld Tab

• With 1-1/8" x 3/8" oblong hole in one leg
• Both legs are 2" in length
• 1" wide x 3/16" thick

ITEM #
WT412



1-1/2" 90° Weld Tab

• With 3/8" hole in 1 leg
• Both legs are 1-1/2" in length
• 1" wide x 1/8" thick

ITEM #
WT231

1-1/2" 90° Weld Tab

• With 3/8" holes in both legs
• Both legs are 1-1/2" length
• 1" wide x 1/8" thick

ITEM #
WT232

BLACKSMITH BRAND
Premium Quality and the Right Price



2 5/8" high
2" wide
1/8" thick
1" base
3/8" hole



ITEM #
WT3



3" high
3" wide
7/8" extension
3/8" hole



ITEM #
WT5



3 1/2" high
1 1/2" extension
1" wide
1/8" thick
3/8" hole



ITEM #
WT8



1 5/8" high
1" wide
1/8" thick
3/8" hole



ITEM #
WT4



2 1/2" high
1 1/2" wide
1/8" thick
3/8" hole



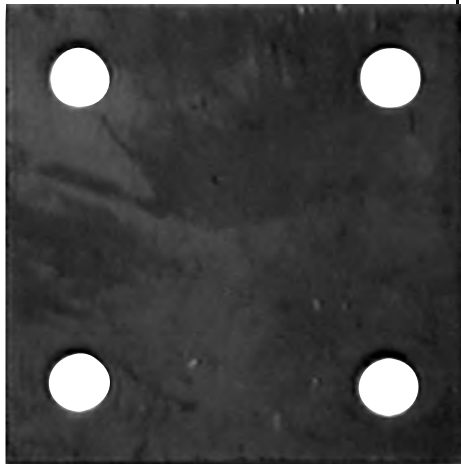
ITEM #
WT9



2 1/4" high
1" wide
1/8" thick
3/8" hole



ITEM #
WT2



Square Base Plates

• Four 3/8" holes

3", 4" and 5" plates are 3/16" thick.

6" and 8" plates are 1/4" thick.

Available in plain steel and galvanized steel.



ITEM #	PLAIN STEEL	ITEM #	GALVANIZED
WT6B	3" x 3"	WT6BG	3" x 3"
WT7	4" x 4"	WT7G	4" x 4"
WT115	5" x 5"	WT115G	5" x 5"
WT11	6" x 6"	WT11G	6" x 6"
WT12	8" x 8"	WT12G	8" x 8"



3 7/16" long
1 1/2" wide
3/16" thick



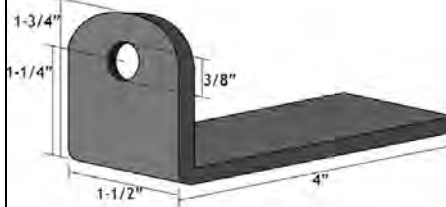
ITEM #
WT6

Heavy Duty 2" x 1" 90° Weld Tab

- With 5/8" x 1" hole in 2" leg
- Other leg is 1" in length
- 1" wide x 3/16" thick

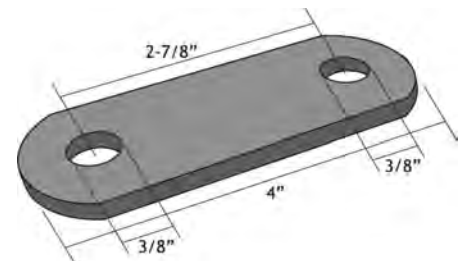


ITEM #
WT112



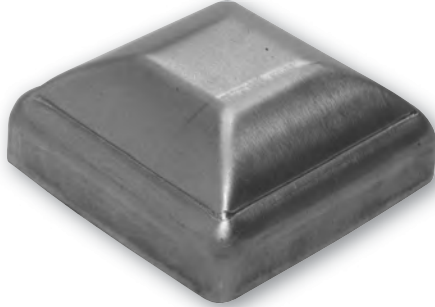
3/8" hole
4" long
1 1/2" wide
3/16" thick

ITEM #
WT14



3/8" holes
4" long
1 1/2" wide
3/16" thick

ITEM #
WT13



Pressed Steel and Aluminum Square Post Caps

- Available in steel and aluminum
- No welding necessary - cap fits tight.

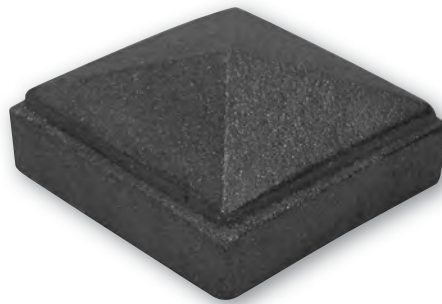
ITEM#	POST SIZE	MATERIAL
SC114	1-1/4"	Steel
SC112	1-1/2"	Steel
SC2	2"	Steel
SC212	2-1/2"	Steel
SC3	3"	Steel
SC4	4"	Steel
SC5	5"	Steel
SC6	6"	Steel
SC8	8"	Steel
SC114A	1-1/4"	Aluminum
SC112A	1-1/2"	Aluminum
SC2A	2"	Aluminum
SC3A	3"	Aluminum
SC4A	4"	Aluminum

Plastic Decorative Ball Cap



- Fits 1/2" square
- Provides protection from sharp edges.

ITEM #	BALL SIZE	
PPPB12	1/2"	1" Dia.



Cast Iron Square Newel Post Caps

ITEM #	POST SIZE	MATERIAL
CI805	1"	Cast Iron
CI804	1 1/4"	Cast Iron
CI806	1-1/2"	Cast Iron
CI807	2"	Cast Iron
CI8212	2-1/2"	Cast Iron
CI808	3"	Cast Iron
CI809	4"	Cast Iron
CI810	5"	Cast Iron
CI811	6"	Cast Iron

Non-Skid Leveler

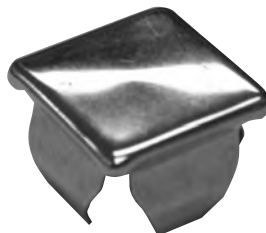
- 1" threaded stem length
- Available in two thread sizes



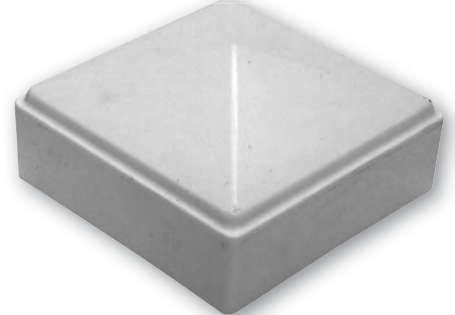
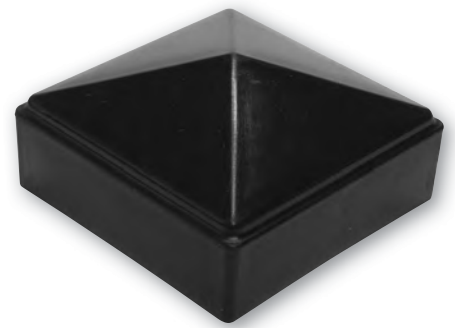
ITEM #	THREAD SIZE	BASE SIZE
PP7B14	1/4"-20	1-1/8" Dia.
PP7B38	3/8"-16	1-1/8" Dia.

Nickel-Plated Metal Spring Caps

- Fits 16 or 18 gauge tubing
- Nickel plated metal spring caps are designed to insert inside steel tubing. Excellent finish for tube ends.



ITEM #	TUBE SIZE	TUBE GAUGE
SC34P	3/4" tube	16 or 18 gauge



Plastic Square Newel Post Caps

- An economical alternative to cast iron

ITEM#	POST SIZE	COLOR
PS807B	2"	Black Plastic
PS807W	2"	White Plastic
PS808B	3"	Black Plastic
PS808W	3"	White Plastic

Two-Sided Metal Threaded Greater Clips



- Fits 16 or 18 gauge tubing
- 1/4"-20 threaded hole for leveler

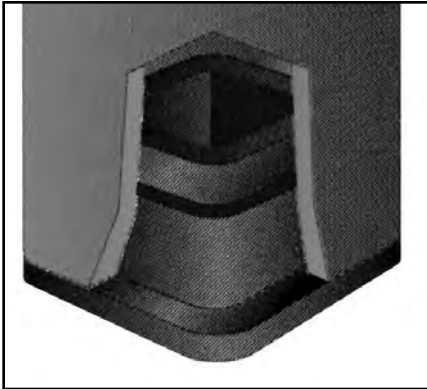
ITEM #	TUBE SIZE	TUBE GAUGE
PP734	3/4" tube	16 or 18 gauge
PP71	1" tube	16 or 18 gauge

Four Sided Metal Threaded Greater Clips



- Fits 16 or 18 gauge tubing
- 3/8"-16 threaded hole for leveler

ITEM #	TUBE SIZE	TUBE GAUGE
PP7112	1-1/2" tube	16 or 18 gauge



High Quality Plastic Tube Plugs

- High grade plastic
- Black or white finish

Provides a clean finish to tubing ends. Protects against injury from sharp tubing edges. Keeps dirt and moisture out from inside tubing.



ITEM #	TUBE SIZE	TUBE GA.	COLOR
PP12	1/2" x 1/2"	16	Black
PP12W	1/2" x 1/2"	16	White
PP58	5/8" x 5/8"	16	Black
PP34	3/4" x 3/4"	16	Black
PP116	1" x 1"	16	Black
PP116W	1" x 1"	16	White
PP111	1" x 1"	11	Black
PP11416	1-1/4" x 1-1/4"	16	Black
PP11411	1-1/4" x 1-1/4"	11	Black
PP11216	1-1/2" x 1-1/2"	16	Black
PP11211	1-1/2" x 1-1/2"	11	Black
PP216	2" x 2"	16	Black
PP211	2" x 2"	11	Black
PP214	2" x 2"	14	Black
PP2116	2" x 1"	16	Black

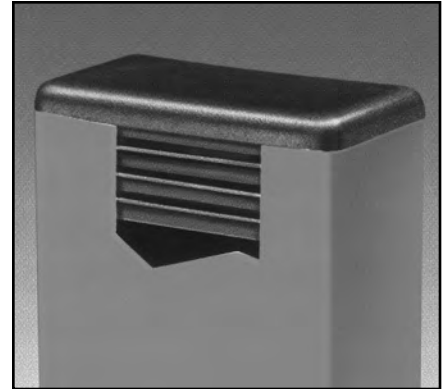
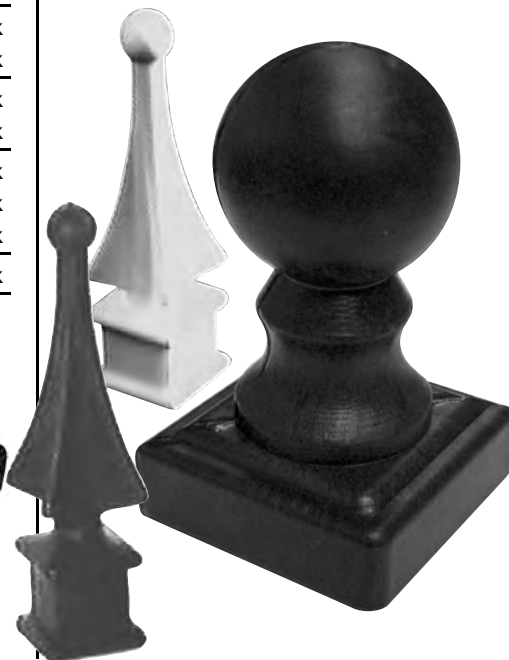


Polyethylene Ribbed Style Square Tubing Plugs

- Black finish

The square series has a horizontal ribbed design for built-in flexibility to fit multiple tube gauges. Soft, low density polyethylene standard material.

ITEM #	TUBE SIZE	TUBE GA.	COLOR
PPSQ58	5/8"	14-18	Black
PPSQ6	3/4"	14-20	Black
PPSQ8	1"	14-20	Black
PPSQ10	1-1/4"	14-20	Black
PPSQ12	1-1/2"	14-20	Black
PPD210	2"	14-18	Black
PPD222	2"	10-14	Black
PPSQ201	2-1/2"	14-20	Black
PPSQ6241	3"	14-20	Black

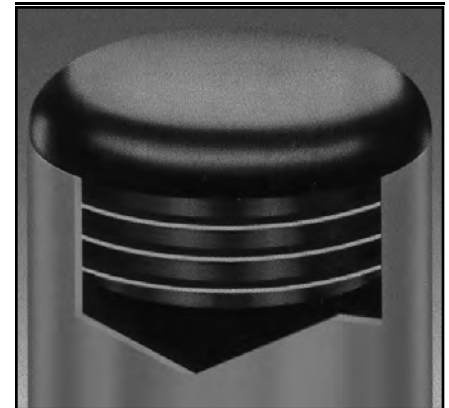


Polyethylene Ribbed Style Rectangular Tubing Plugs

- Black finish

Built-in flexibility to fit multiple tube gauge sizes. Soft, Low density polyethylene standard material.

ITEM #	TUBE SIZE	TUBE GA.	COLOR
PPRC1020	1" x 2"	14-18	Black
PPRC15301	1-1/2" x 3"	14-20	Black
PPRC20301	2" x 3"	14-20	Black
PPRC20401	2" x 4"	14-20	Black



Polyethylene Ribbed Style Round Tubing Plugs

- Black finish
- Low cost universal closures

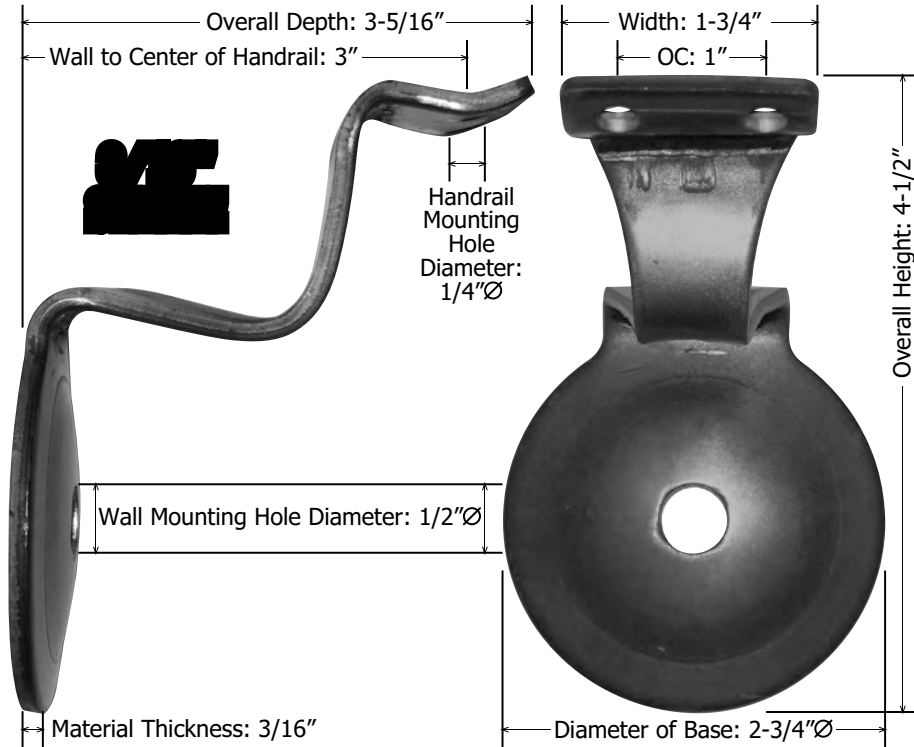
Black with texture finish. High density polyethylene standard material.

ITEM #	TUBE SIZE	TUBE GA.	COLOR
PPRT6	3/4"	14-20	Black
PPRT8	1"	14-20	Black
PPRT10	1-1/4"	14-20	Black
PPRT12	1-1/2"	14-20	Black
PPRT16	2"	14-20	Black

Heavy Duty Stamped Steel Handrail Bracket

- Can be used with round or square handrails
- Stamped from 3/16" black steel

For applications that require extra strength.

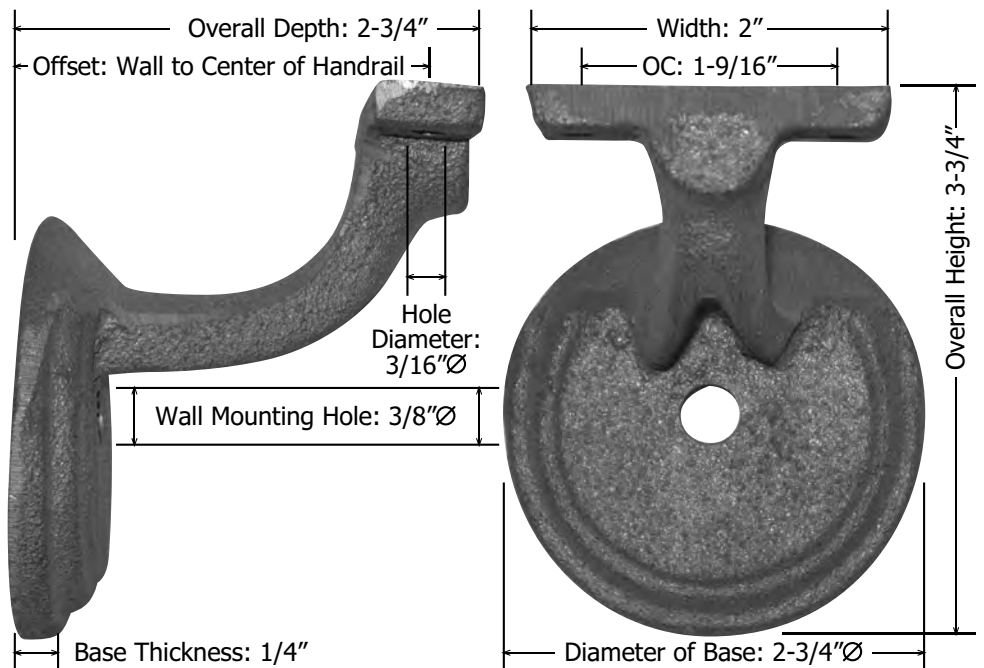


ITEM #	OFFSET
SC35B	3"

Cast Iron Handrail Bracket

- For square handrails
- Textured finish

For traditional applications.



ITEM #	OFFSET
CI3A	2-3/8"
CI3B	3"



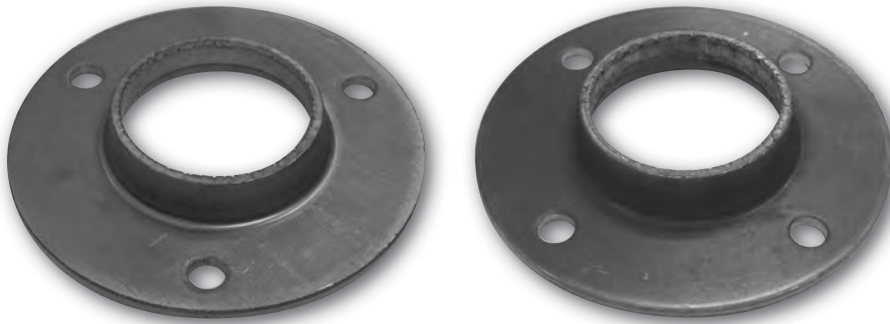
Cast Iron Handrail Bracket

- For 1-1/2" round tubing

Rail Mounting Plate:
 1-3/8" x 2-3/4" x 1/8" thick
 Weight: 1.75 lbs.

ITEM #	WALL OFFSET	BASE SIZE
CI3HRB	3-1/2"	3-3/4"

800-772-4706
 M-F 8 AM - 5 PM
 Our Team of Experts are Ready to Help



Heavy Duty Steel Flanges

• For round pipe

- 1/8" material thickness
- Three or four hole styles

ITEM #	MATERIAL THICKNESS	HOLE DIA.	FITS PIPE	# OF MTG. HOLES	MTG. HOLE DIAMETER	OVERALL DIAMETER
SC13152	1/8"	1.315"	1"	3	1/4"	3-1/2"
SC114F	1/8"	1.66"	1-1/4"	3	5/16"	3-3/4"
SC1144H	1/8"	1.66"	1-1/4"	4	5/16"	3-3/4"
SC112F	1/8"	1.90"	1-1/2"	4	5/16"	4-1/4"
SC2375F	1/8"	2-3/8"	2"	3	3/8"	4-5/8"



Snap Cover Base Flanges and Covers

Snap Flanges

- 1/4" steel thickness
- Four mounting holes
- Built for snap on base covers below

ITEM #	HOLE DIA.	FITS PIPE	DIA.
SC166S	1.66"	1-1/4"	4-5/16"
SC190S	1.90"	1-1/2"	4-5/16"

Snap Flange Covers

- 18 gauge steel

ITEM #	HOLE DIA.	FITS PIPE	DIA.
SC166C	1.66"	1-1/4"	4-1/2"
SC190C	1.90"	1-1/2"	4-1/2"



Raised Cover Plate

- 1/8" thick, for 1-1/4" pipe

ITEM #	HOLE DIA.	FITS PIPE	DIA.
SC250	1.66"	1-1/4"	3-7/8"



Steel Flanges for Square Tubing

- An attractive cover plate for square tubing bases

ITEM #	TUBE SIZE	OVERALL WIDTH
SC112FSQ	1-1/2"	3"
SC2FSQ	2"	4"

Weld On Pipe End Caps

- Sch. 40
- Beveled edges for easy welding
- Carbon steel
- For use on fences, bumpers and repair



ITEM #	PIPE SIZE I.D.	DESCRIPTION
ELCAP1	1"	End Cap
ELCAP114	1-1/4"	End Cap
ELCAP112	1-1/2"	End Cap
ELCAP2	2"	End Cap
ELCAP212	2-1/2"	End Cap
ELCAP3	3"	End Cap
ELCAP4	4"	End Cap
ELCAP6	6"	End Cap



Stamped Steel Pipe End Caps



- Stamped from heavy gauge steel

- Butt welds to pipe for railing ends, etc.
- A low cost alternative to forged pipe fittings in non-fluid and non-pressure related applications

ITEM #	PIPE O.D.	DESCRIPTION
SC114RP	1-5/8"	End Cap
SC112RP	1-7/8"	End Cap
SC2RP	2-3/8"	End Cap

Seamless Weld-On Pipe Elbows

- **Grade ASTM A234WPB**
- Carbon steel • Schedule 40
- Long Radius
- Beveled edges ready for easy welding
- **Many Uses**
- Structural pipe fabrication, handrail, bumpers, maintenance and more



ITEM #	PIPE SIZE I.D.	DESCRIPTION
EL1245	1/2"	45° Bend
EL3445	3/4"	45° Bend
EL145	1"	45° Bend
EL11445	1-1/4"	45° Bend
EL11245	1-1/2"	45° Bend
EL245	2"	45° Bend
EL21245	2-1/2"	45° Bend
EL345	3"	45° Bend
EL445	4"	45° Bend
EL645	6"	45° Bend



ITEM #	PIPE SIZE I.D.	DESCRIPTION
EL1290	1/2"	90° Bend
EL3490	3/4"	90° Bend
EL190	1"	90° Bend
EL11490R	1-1/4"	90° Bend
EL11290	1-1/2"	90° Bend
EL290	2"	90° Bend
EL21290	2-1/2"	90° Bend
EL390	3"	90° Bend
EL490	4"	90° Bend
EL690	6"	90° Bend

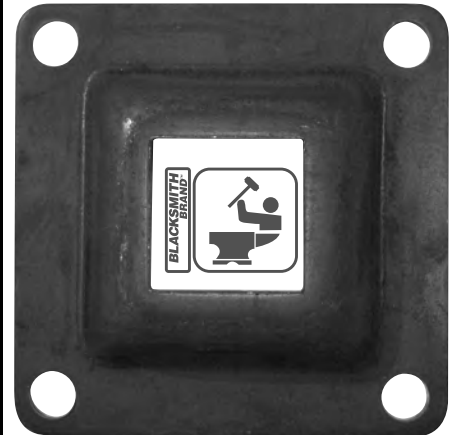
Weld-On Pipe "T"'S

- **Beveled edges**
- **Black finish**
- **Schedule 40 A234WPB pipe**



ITEM #	PIPE SIZE I.D.	DESCRIPTION
ELTE1	1"	90°/180° T
ELTE114	1-1/4"	90°/180° T
ELTE112	1-1/2"	90°/180° T
ELTE2	2"	90°/180° T
ELTE212	2-1/2"	90°/180° T
ELTE3	3"	90°/180° T
ELTE4	4"	90°/180° T
ELTE6	6"	90°/180° T

We Appreciate Your Business!



Raised Square Flanges

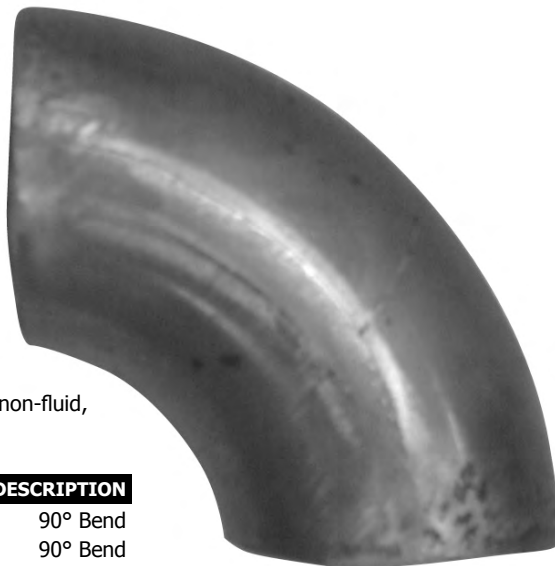
- **1/8" Thick**
- 7/16" mounting holes

ITEM #	FITS	OVERALL DIMS.
WT8041	1" sq. Tube	4" sq.
WT135	1-1/4" sq. Tube	4" sq.
WT8047	1-1/2" sq. Tube	4" sq.
WT137	2" sq. Tube	5-1/4" sq.
WT8049	2-1/2" Tube	5" sq.



90° Pipe Railing Elbows

- **With seam**
- **Long radius**
- Made from mild steel
- Great for handrails and other non-fluid, non-pressure applications



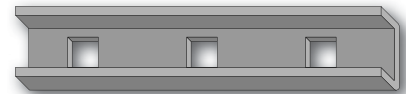
ITEM #	PIPE SIZE I.D.	DESCRIPTION
EL11490S	1-1/4"	90° Bend
EL11290S	1-1/2"	90° Bend



MADE IN THE USA

Pre-Punched Rollformed Channel

- Stocked in 20' lengths
- Every hole exactly on center
- Great for window guards and fences
- NEW automated punching technique
- Provide extra security for doors, window guards and fencing



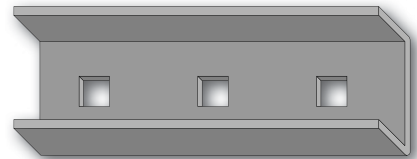
1" Rollformed Channel

- 1" x 1/2" x 1/8"
- 20 ft. length



1-1/2" Rollformed Channel

- 1-1/2" x 1/2" x 1/8"
- 20 ft. length



2" Rollformed Channel

- 2" x 1" x 1/8"
- 20 ft. length



Unpunched Rollformed Channel

- Used for flush top or bottom
- 20 foot length

ITEM #	CHANNEL SIZE
PBCR1000	1" x 1/2" x 1/8"
PBCR1120000	1-1/2" x 1/2" x 1/8"
PBCR2000	2" x 1" x 1/8"

Square Hole 1" x 1/2" x 1/8" Rollformed Channel



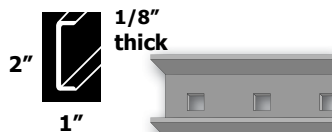
ITEM #	CHANNEL SIZE	HOLE SIZE	FITS PICKET	OPEN AREA	ON CENTER
PBCR1004	1" x 1/2" x 1/8"	9/16"	1/2" Square	3-1/2"	4"
PBCR100412	1" x 1/2" x 1/8"	9/16"	1/2" Square	4"	4-1/2"
PBCR1005	1" x 1/2" x 1/8"	9/16"	1/2" Square	4-1/2"	5"
PBCR1006	1" x 1/2" x 1/8"	9/16"	1/2" Square	5-1/2"	6"

Square Hole 1-1/2" x 1/2" x 1/8" Rollformed Channel

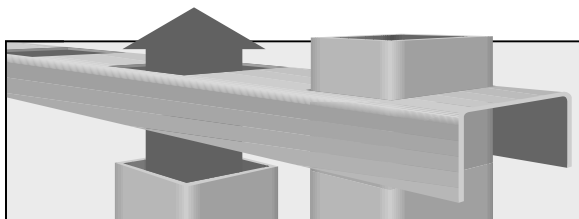


ITEM #	CHANNEL SIZE	HOLE SIZE	FITS PICKET	OPEN AREA	ON CENTER
PBCR1120412	1-1/2" x 1/2" x 1/8"	9/16"	1/2" Square	3-1/2"	4"
PBCR1120512	1-1/2" x 1/2" x 1/8"	9/16"	1/2" Square	4-1/2"	5"
PBCR1120612	1-1/2" x 1/2" x 1/8"	9/16"	1/2" Square	5-1/2"	6"
PBCR1120434	1-1/2" x 1/2" x 1/8"	13/16"	3/4" Square	3-1/4"	4"
PBCR1120534	1-1/2" x 1/2" x 1/8"	13/16"	3/4" Square	4-1/4"	5"
PBCR1120634	1-1/2" x 1/2" x 1/8"	13/16"	3/4" Square	5-1/4"	6"

Square Hole 2" x 1" x 1/8" Rollformed Channel



ITEM #	CHANNEL SIZE	HOLE SIZE	FITS PICKET	OPEN AREA	ON CENTER
PBCR2118434	2" x 1" x 1/8"	13/16"	3/4" Square	3-1/4"	4"
PBCR2118534	2" x 1" x 1/8"	13/16"	3/4" Square	4-1/4"	5"
PBCR2118634	2" x 1" x 1/8"	13/16"	3/4" Square	5-1/4"	6"



Fabrication Ease: Slide pickets through the punched holes and tack-weld. Attach to posts and your fence is built.

Square Hole 1" x 1/2" x 1/8" Bar Channel

ITEM #	CHANNEL SIZE	HOLE SIZE	FITS PICKET	OPEN AREA	ON CENTER
PBC1004	1" x 1/2" x 1/8"	9/16"	1/2" Square	3-1/2"	4"
PBC100412	1" x 1/2" x 1/8"	9/16"	1/2" Square	4"	4-1/2"
PBC1005	1" x 1/2" x 1/8"	9/16"	1/2" Square	4-1/2"	5"
PBC1006	1" x 1/2" x 1/8"	9/16"	1/2" Square	5-1/2"	6"

Round Hole 1" Bar Channel

ITEM #	CHANNEL SIZE	HOLE SIZE	FITS PICKET	OPEN AREA	ON CENTER
PBC1004RD	1" x 1/2" x 1/8"	9/16"	1/2" Round	3-1/2"	4"
PBC100412RD	1" x 1/2" x 1/8"	9/16"	1/2" Round	4"	4-1/2"
PBC1005RD	1" x 1/2" x 1/8"	9/16"	1/2" Round	4-1/2"	5"
PBC1006RD	1" x 1/2" x 1/8"	9/16"	1/2" Round	5-1/2"	6"

Square Hole 1-1/2" x 1/2" x 1/8" Bar Channel

ITEM #	CHANNEL SIZE	HOLE SIZE	FITS PICKET	OPEN AREA	ON CENTER
PBC1120412	1-1/2" x 1/2" x 1/8"	9/16"	1/2" Square	3-1/2"	4"
PBC11241212	1-1/2" x 1/2" x 1/8"	9/16"	1/2" Square	4"	4-1/2"
PBC1120512	1-1/2" x 1/2" x 1/8"	9/16"	1/2" Square	4-1/2"	5"
PBC1120612	1-1/2" x 1/2" x 1/8"	9/16"	1/2" Square	5-1/2"	6"
PBC11241258	1-1/2" x 1/2" x 1/8"	11/16"	5/8" Square	3-7/8"	4-1/2"
PBC1120558	1-1/2" x 1/2" x 1/8"	11/16"	5/8" Square	4-3/8"	5"
PBC1120434	1-1/2" x 1/2" x 1/8"	11/16"	3/4" Square	3-1/4"	4"
PBC11243434	1-1/2" x 1/2" x 1/8"	11/16"	3/4" Square	4"	4-3/4"
PBC1120634	1-1/2" x 1/2" x 1/8"	11/16"	3/4" Square	5-1/4"	6"

Square Hole 1-1/2" x 3/4" x 1/8" Bar Channel

ITEM #	CHANNEL SIZE	HOLE SIZE	FITS PICKET	OPEN AREA	ON CENTER
PBC11234412	1-1/2" x 3/4" x 1/8"	9/16"	1/2" Square	3-1/2"	4"
PBC1123441212	1-1/2" x 3/4" x 1/8"	9/16"	1/2" Square	4"	4-1/2"
PBC11234512	1-1/2" x 3/4" x 1/8"	9/16"	1/2" Square	4-1/2"	5"
PBC11234612	1-1/2" x 3/4" x 1/8"	9/16"	1/2" Square	5-1/2"	6"
PBC1123441258	1-1/2" x 3/4" x 1/8"	11/16"	5/8" Square	3-7/8"	4-1/2"
PBC11234558	1-1/2" x 3/4" x 1/8"	11/16"	5/8" Square	4-3/8"	5"
PBC11234434	1-1/2" x 3/4" x 1/8"	13/16"	3/4" Square	3-1/4"	4"
PBC1123443434	1-1/2" x 3/4" x 1/8"	13/16"	3/4" Square	4"	4-3/4"
PBC11234634	1-1/2" x 3/4" x 1/8"	13/16"	3/4" Square	5-1/4"	6"

Square Hole 2" x 1" x 1/8" Bar Channel

ITEM #	CHANNEL SIZE	HOLE SIZE	FITS PICKET	OPEN AREA	ON CENTER
PBC2118458	2" x 1" x 1/8"	11/16"	5/8" Square	3-3/8"	4"
PBC2118558	2" x 1" x 1/8"	11/16"	5/8" Square	4-3/8"	5"
PBC2118434	2" x 1" x 1/8"	13/16"	3/4" Square	3-1/4"	4"
PBC2118534	2" x 1" x 1/8"	13/16"	3/4" Square	4-1/4"	5"
PBC2118634	2" x 1" x 1/8"	13/16"	3/4" Square	5-1/4"	6"
PBC211851	2" x 1" x 1/8"	1-1/16"	1" Square	4"	5"
PBC211861	2" x 1" x 1/8"	1-1/16"	1" Square	5"	6"

Diamond Hole 1-1/2" x 1/2" x 1/8" Bar Channel

ITEM #	CHANNEL SIZE	HOLE SIZE	FITS PICKET	OPEN AREA	ON CENTER
PBC11241212DM	1-1/2" x 1/2" x 1/8"	9/16"	1/2" Diamond	3.8"	4-1/2"
PBC11243458DM	1-1/2" x 1/2" x 1/8"	11/16"	5/8" Diamond	3.9"	4-3/4"
PBC112534DM	1-1/2" x 1/2" x 1/8"	13/16"	3/4" Diamond	4"	5"

Diamond Hole 2" x 1" x 1/8" Bar Channel

ITEM #	CHANNEL SIZE	HOLE SIZE	FITS PICKET	OPEN AREA	ON CENTER
PBC2534DM	2" x 1" x 1/8"	13/16"	3/4" Diamond	4"	5"
PBC2634DM	2" x 1" x 1/8"	13/16"	3/4" Diamond	5"	6"
PBC25141DM	2" x 1" x 1/8"	1-1/16"	1" Diamond	3.8"	5-1/4"
PBC261DM	2" x 1" x 1/8"	1-1/16"	1" Diamond	4.6"	6"

Pre-Punched Bar Channel

Punched Using Structural Bar Channel



Follow us on Facebook and Twitter for design ideas and weekly specials!



Most Popular

1/2"

4 1/4" High
Fits 1/2" Square

ITEM#
CI9X

5/8"

4 1/4" High
Fits 5/8" Square

ITEM#
CI9X58

3/4"

4 1/4" High
Fits 3/4" Square

ITEM#
CI9X34

3/4"

Extra Large
6" High
Fits 3/4" Square

ITEM#
CI9Y

1"

8" High
Fits over 1" Square

ITEM#
CI9Z

1 1/4"

6" H x 2" W
Base 2 1/8" Square
Fits 1 1/4" Square

ITEM#
CI9XL114



1"

4" High
1 3/8" W
5/8" Deep shaft
Plugs into 1"

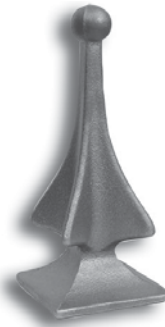
ITEM#
CI9C



3"

7 1/2" High
Base 3 1/4" sq.
3 lbs

ITEM#
CI9324



1/2"

4 1/4" High
Fits 1/2" Square

ITEM#
CI9A



1/2"

4" High
Fits 1/2" Square

ITEM#
CI649

5/8"

4 1/2" High
Fits 5/8" Square

ITEM#
CI64958

3/4"

4 1/2" High
Fits 3/4" Square

ITEM#
CI649S

3/4"

Extra Large
5 1/2" High
Fits 3/4" Square

ITEM#
CI64934

1"

3 1/4" Wide
6 1/4" High
Fits 1" Square

ITEM#
CI8025

1 1/2"

5 3/4" W
9" H
Base 2 1/4" Square
Fits 1 1/2" Square

ITEM#
CI649ZXL



1"

Height 4 1/2".
1" square base.
Plugs into 1" square tube.

ITEM#
CI649X



1/2"

2 5/8" W
4 3/4" H
Fits over 1/2" sq.
Base 1 1/8" sq. OD
.5 lbs

ITEM#
CI865



3/4"

3 1/2" W
6 3/4" H Base
1 3/16" sq. OD
3/4" sq. ID
1 lbs

ITEM#
CI8804



4"

6" W
9 1/4" H
Base 4"x4"
5.25 lbs

ITEM#
CI8805FB



Actual dimensions may vary slightly due to variations in manufacturer's production.

1/2"

2 3/4" W
6" H
Fits 1/2" Sq.

ITEM#
CI66

3/4"

2 3/4" W
6" H
Fits 3/4" Sq.

ITEM#
CI6634



1/2"

2 1/2" W
4 1/2" H
Fits 1/2" Square

ITEM#
CI66XS



3/4"

5 3/4" H
3/4" sq..
Fits 3/4" Square

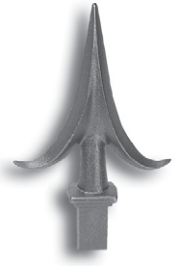
ITEM#
CI66434



1"

4 1/2" W
6 5/8" H
Plugs into 1" square tube.

ITEM#
CI864



1/2"

5-1/4" High
3-3/8" Wide
Fits 1/2" Sq..
Wt: 0.5 lbs.

ITEM#
CI656

5/8"

5" High
3-1/4" Wide
Fits 5/8" Sq..
Wt: 0.4 lbs.

ITEM#
CI7065

3/4"

5-1/2" High
3-1/4" Wide
Fits 3/4" Sq..
Wt: 0.46 lbs.

ITEM#
CI65634YS

3/4"

6-7/8" High
4-1/8" Wide
Fits 3/4" Sq..
Wt: 1.0 lbs.

ITEM#
CI65634



1/2"

2 1/2" W x
4 5/16" H
Fits 1/2" Square

ITEM#
CI656XS



5/8"

5 3/4" H
Fits 5/8" Sq..

ITEM#
CI8005



1/2"

2 5/8" W
4 5/8" H
Fits over 1/2" sq..
Base 1 1/4" sq.. OD
.5 lb

ITEM#
CI8832



3/4"

3 5/8" W
6 1/8" H
Fits over 3/4"sq..
Base 1-1/4" sq.. OD
1 lb

ITEM#
CI8832Y

1"

4 1/2" W
7 5/8" H
Fits over 1" sq..
Base 1 1/2" sq.. OD
2.25 lbs.

ITEM#
CI8832Z

5/8"

3" W
5-1/2" H
Fits over 5/8" sq..
.8 lbs.

ITEM#
CI880258

3/4"

5" W
9" H
Fits over 3/4" sq..
3 lbs.

ITEM#
CI880234

1"

5 1/2" W
9 1/2" H
Fits over 1" sq..
3 lbs.

ITEM#
CI8802



1/2"

2-1/2" W
4" H
Base 1-1/8" sq..
Fits 1/2" sq..
.5 lbs

ITEM#
CI8821



5/8"

3" W
5" H
Base 1-3/16" sq..
Fits 5/8" sq..
.75 lbs

ITEM#
CI8858

3/4"

3-1/2" W
6" H
Base 1-1/2" sq..
Fits 3/4" sq..
1.25 lbs

ITEM#
CI8020

1/2"

4 1/2" High
Fits 1/2" Square

ITEM#
CI667

3/4"

4" High
Fits 3/4" Square

ITEM#
CI21834



1/2"

2-3/4" Wide
4-3/4" High
Fits 1/2" Square



ITEM#
CI7075

3/4"

4" Wide
7" High
Fits 3/4" Square



ITEM#
CI7095

1/2"

2-1/2" Wide
4-5/8" High
Fits 1/2" Square

ITEM#
CI7080

3/4"

3-3/4" Wide
6-5/8" High
Base 2" round OD
Fits 3/4" Square



ITEM#
CI853Y

1/2"

5 1/4" H x 4" W
Fits 1/2" Round



ITEM#
CI7055

3/4"

6" W x 11" H
3 lbs.
Fits over 3/4" sq..
1/2" deep



ITEM#
CI9320

1/2"

2 5/8" W x 3 1/4" H
for 1/2" Square -
Single faced



ITEM#
CIAA

1/2"

3 1/2" W x
6 1/2" H
Fits 1/2" Sq.

ITEM#
CI655

3/4"

3-3/8" W x
6 1/2" H
Fits 3/4" Sq..

ITEM#
CI601334



1/2"

2 1/4" W x
4 3/4" H
Fits 1/2" Square

ITEM#
CI659

5/8"

3 1/4" W x
5 1/4" H
Fits 5/8" Square

ITEM#
CI7085

3/4"

3" W x
4 3/4" H
Fits 3/4" Square

ITEM#
CI7090



1/2"

4 7/8" H
Fits 1/2" Sq..

ITEM#
CI65912S

3/4"

5" H
Fits 3/4" Sq..

ITEM#
CI65934S



Horse Head Post Caps



ITEM#
CIHRSEHD2



ITEM#
CIHRSEHD4

9-1/2" High
7" Wide
Hole base
Fits on top 2" OD
also fits inside 3" ID

11-3/4" High
8-1/2" Wide
Hole base
Fits on top 4" OD
also fits
inside 4-1/2" ID

Actual dimensions may vary slightly due to variations in manufacturer's production.

1"



3" H
Base 1" sq.. Solid
.5 lb

ITEM#
CI8010

1"



4 1/4" H
Base 1-1/4" sq.. OD
Plug 1" sq.. x
3/4" Deep
.75 lb

ITEM#
CI9J

3/4"

5" High
2" Wide
4 Sided Spire
Fits 3/4" Sq..

ITEM#
CI671

1"

8" High
1-1/2" Wide
4 Sided Spire
Fits 1" Sq..

ITEM#
CI671XL



3/4"



1" W
4 5/8" H
Fits 3/4" Square

ITEM#
CI954

1/2"



2" W
5 3/8" H
1" Octagonal Base
.5 lbs
Fits 1/2" Square

ITEM#
CI8602

1"



4 Sided arrow point
4 1/4" H
Plug 1" sq.. x 1" deep
.75 lbs

ITEM#
CI661

3/4"



2" W
5" H
Base 1/2" round
Fits over 3/4" sq..

ITEM#
CI840YN

1"



8" H
Base 1" sq..
2 lb

ITEM#
CI669

1/2"



3" W
7 1/4" H
Base 1" sq.. OD
1/2" sq.. ID
.75 lb

ITEM#
CI668

1"



2 3/4" W
8" H
Fits 1" Square
1.75 lb

ITEM#
CI8015

3/4"



1 5/8" W
6" H
Plugs into 3/4" sq..
.43 lb

ITEM#
CI521

Actual dimensions may vary slightly due to variations in manufacturer's production.

1"
CAST IRON



2-1/4" H
1-1/4" W
Base 1" dia Solid
1/2 lb.

ITEM#
CI657XS

1 3/4"
CAST IRON



3-1/2" H
2-1/4" W
Base is 1-3/4"
Round

ITEM#
CI8035

1 3/4"
CAST IRON




Pineapple
4-3/8" Tall
1-3/4" Round Base

ITEM#
CI657

Pineapple Point

CAST IRON



1/2"	3/4"	1"
1" W 2" H Fits 1/2" Sq.	1-1/4" W 2-1/4" H Fits over 3/4" Sq..	1-1/4" W 2-1/2" H Fits 1" Sq.

ITEM#
CI7070

ITEM#
CI834

ITEM#
CI8030

CAST IRON



4"
6" H
4" Sq..

ITEM#
CI6059

1"



Ball Top
1" diameter.
Plugs into 1" square tubing
1 1/2" high.

ITEM#
CI7X

1 1/4"



Ball Top
1 1/2" dia.
Drives in 1 1/4" sq.. tubing
3 1/2" high

ITEM#
CI7XL

1 1/2"



Ball Top
1 1/2" diameter
1 1/2" square base
2 1/2" tall

ITEM#
CI116

1"



Lemon Drop Top
Plugs into 1" square tubing.
2" high.

ITEM#
CI117

Actual dimensions may vary slightly due to variations in manufacturer's production.



Cast Iron Newel Post Balls
• Made to fit over square tubing

ITEM#	POST SIZE	HEIGHT
CI108	1"	2-3/4"
CI114	1-1/4"	2-3/4"
CI112	1-1/2"	2-3/4"
CI118	2"	2-3/4"
CI121	2-1/2"	4-1/2"
CI120	3"	5"
CI119	4"	5-1/2"
CI125	5"	6-1/2"
CI126	6"	6-1/2"



Cast Iron Newel Post Caps
• Made to fit over square tubing

ITEM#	POST SIZE
CI805	1" x 1"
CI804	1-1/4" x 1-1/4"
CI806	1-1/2" x 1-1/2"
CI807	2" x 2"
CI8212	2-1/2" x 2-1/2"
CI808	3" x 3"
CI809	4" x 4"
CI810	5" x 5"
CI811	6" x 6"

Pressed Steel, Aluminum and Galvanized Post Caps

• Available in steel, aluminum and galvanized

No welding necessary - cap fits tight.



ITEM#	POST SIZE	MATERIAL
SC114	1-1/4"	Steel
SC114A	1-1/4"	Aluminum
SC112	1-1/2"	Steel
SC112A	1-1/2"	Aluminum
SC2	2"	Steel
SC2GAL	2"	Galvanized Steel
SC2A	2"	Aluminum
SC212	2-1/2"	Steel
SC212GAL	2-1/2"	Galvanized Steel
SC3	3"	Steel
SC3GAL	3"	Galvanized Steel
SC3A	3"	Aluminum
SC4	4"	Steel
SC4A	4"	Aluminum
SC5	5"	Steel
SC6	6"	Steel
SC8	8"	Steel

CAST IRON



3-1/2" - Single faced

ITEM#
CI7027

CAST IRON



4" - Double faced

ITEM#
CI7005

CAST IRON



3-1/8" - Single faced

ITEM#
CI7020

CAST IRON



4" - Single faced

ITEM#
CI7010

CAST IRON



2-1/2" - Single faced

ITEM#
CI7025

CAST IRON



6" dia, 1/2" thick
1" Center hole, raise star
is level with rim. 2.5 lbs.

ITEM#
CI8609

CAST IRON



2-7/8" W x 4" H
Single faced

ITEM#
CI84



CAST IRON

9-1/4" W
3-3/4" H

ITEM#
CI79R

CAST IRON

13-1/2" W
6-3/4" H

ITEM#
CI89R



CAST IRON

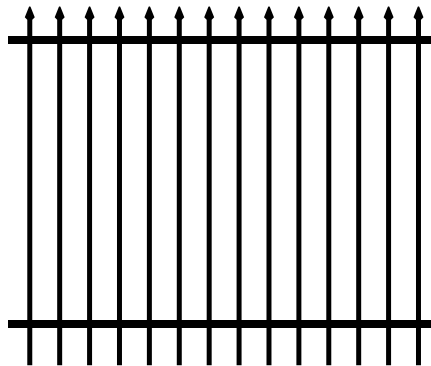


6-1/2" Dia

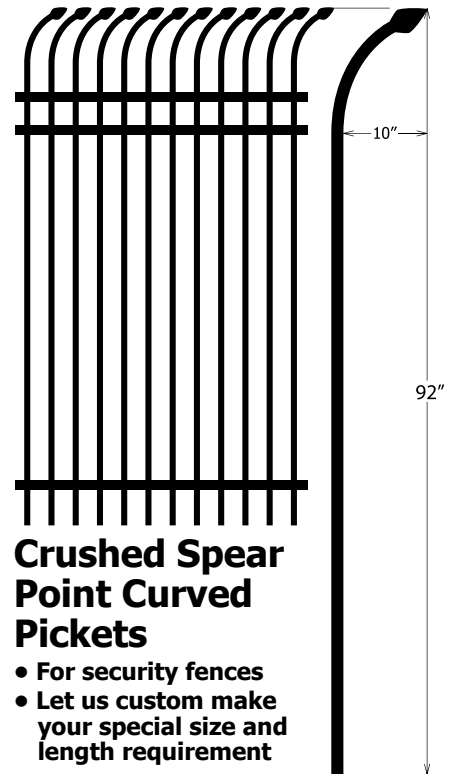
ITEM#
CI85R

Crushed Steel Spear Point Straight Pickets

- 1/2", 3/4", and 1" Square tube x 16 gauge
- Available in plain, galvanized (except 1/2"), or red primed finish
- Two stock lengths and an infinite choice of custom lengths are available



ITEM#	SIZE	FINISH
MCC126BLK	1/2" x 6'	Plain
MCC128BLK	1/2" x 8'	Plain
MCC346BLK	3/4" x 6'	Plain
MCC346	3/4" x 6'	Red Primed
MCC346GLV	3/4" x 6'	Galvanized
MCC348BLK	3/4" x 8'	Plain
MCC348	3/4" x 8'	Red Primed
MCC348GLV	3/4" x 8'	Galvanized
MCC16BLK	1" x 6'	Plain
MCC16	1" x 6'	Red Primed
MCC16GLV	1" x 6'	Galvanized
MCC18BLK	1" x 8'	Plain
MCC18	1" x 8'	Red Primed
MCC18GLV	1" x 8'	Galvanized



Crushed Steel Spear Point Curved Pickets

- For security fences
- Let us custom make your special size and length requirement

ITEM#	SIZE	FINISH
MCC348BLKARC	3/4" x 92"	Plain
MCC348ARC	3/4" x 92"	Red Primed
MCC348GLVARC	3/4" x 92"	Galvanized

Plastic Spear Point Finials

Highest Quality!! Check the many advantages:

- Will not rust or deteriorate
- Shipping weight approximately 80% less than cast iron
- Molded from high grade plastics

Width 2 1/4"
Height 4 3/8"



PLASTIC



ITEM#	PICKET SIZE	COLOR
PSM25	1/2"	Black
PSM25BZ	1/2"	Bronze
PSM25W	1/2"	White
PSM2558	5/8"	Black
PSM2534W	3/4"	White
PSM2534	3/4"	Black

• Width 1 1/2"
• Height 4 1/4"



PLASTIC

ITEM#	PICKET SIZE	COLOR
PSM30	1/2"	Black
PSM30W	1/2"	White
PSM3058	5/8"	Black
PSM34	3/4"	Black
PSM34W	3/4"	White



PLASTIC

Black

- Width: 3 3/8"
- Height: 5 1/2"
- Fits 1/2" x 1/2" square pickets
- Also fits into 1" square tubing 16 ga.

ITEM#
PSM40



PLASTIC

Black

- Width: 1-1/16"
- Height: 2-1/2"
- Fits over 1/2" square pickets
- Also fits into 1" square tubing 16 ga.

ITEM #
PSM50

Plastic Scrolls With Steel Welding Tabs



PLASTIC

Width 6 1/2"
Height 12 1/2"
Fits 1/2" Pickets

ITEM#
PS3



PLASTIC

Width 7 1/2"
Height 16 1/2"
Fits 1/2" Pickets

ITEM#
PS2



PLASTIC

Height 3"
Width 4"
Fits 1/2" Square

ITEM#
PS10A



Plastic Ball Newel Post Caps

- Easy to install
- No painting necessary
- Economically priced

PLASTIC

ITEM #	POST SIZE	COLOR
PS118B	2" x 2"	Black

Plastic Newel Post Caps

- An economical alternative to cast iron

PLASTIC



ITEM#	POST SIZE	COLOR
PS807B	2" x 2"	Black
PS807W	2" x 2"	White
PS808B	3" x 3"	Black
PS808W	3" x 3"	White

Aluminum

Aluminum will not rust and is approximately one third the weight of iron.

Aluminum Ball Point Spears

- 3-7/8" Tall
- Four flute design

ITEM#	FITS
AC9XAL	1/2"
AC9X34AL	3/4"



Aluminum Newell Post Balls

ITEM#	SQ.. SIZE	TYPE
AC118AL	2"	Aluminum
AC120AL	3"	Aluminum
AC119AL	4"	Aluminum



Aluminum Baluster Collars

ITEM#	SQ.. SIZE	TYPE
AC68312AL	1/2"	Aluminum
AC68358AL	5/8"	Aluminum
AC68334AL	3/4"	Aluminum



Aluminum Spear 4-1/4" Tall

ITEM#	SQ.. SIZE	TYPE
AC649AL	1/2"	Aluminum
AC64958AL	5/8"	Aluminum
AC649SAL	3/4"	Aluminum



Aluminum Post Caps

ITEM#	SIZE
AC807AL	2" x 2"
AC808AL	3" x 3"
AC809AL	4" x 4"



- Single faced

ITEM #	SIZE
CI74	8-3/4"
CI73	5-1/2"



- Single faced

ITEM #	SIZE
CI76	2-3/4"
CI82	3-1/2"
CI83	4-3/8"



- Single faced

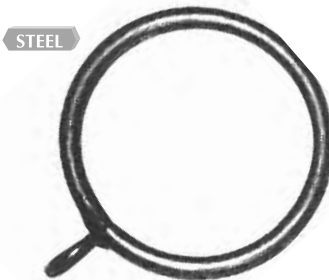
ITEM #	SIZE
CI81	3-3/8"
CI79	4-3/8"



- Single faced
- 7/16" center hole

ITEM #	SIZE
CI78	6-1/4"

Steel Curtain Hanger Rings



1-7/8" O.D.	2-3/8" O.D.
ITEM#	ITEM#
CICD880112	CICD8802



Steel Tube Rings

- Made from square tubing

ITEM #	MATERIAL	O.D. SIZE
SR312	1/2" x 1/2"	3-1/2"
SR4	1/2" x 1/2"	4"
SR412	1/2" x 1/2"	4-1/2"
SR5	1/2" x 1/2"	5"
SR514	1/2" x 1/2"	5-1/4"
SR512	1/2" x 1/2"	5-1/2"
SR6	1/2" x 1/2"	6"
SR8	1/2" x 1/2"	8"
SR10	1/2" x 1/2"	10"

Forged Steel Horse Shoe



4-5/8" W X 5" H

ITEM#
SC101H

1/2"

CAST IRON

Fits over 1/2" Square
2-9/16" H
1-9/16 W



ITEM#
CI212B

1/2"

Fits over 1/2" Round
1 5/8" W
1 3/7" H

ITEM#
CI660XS

5/8"

CAST IRON

Fits 5/8" Round
2 1/4" W
2 1/2" H



ITEM#
CI7030

1/2"

Side View Front View

1/2 inch 3/4 collar
1 5/8" W
1 7/8" H



ITEM#
CI685V

Grooved for 1/2" square on back side.
Completely covers three sides of a 1/2" square picket.



1/2"

Baluster Collar
Fits over 1/2" square
1 3/4" W x 2" H

ITEM#
CI68312

100 pcs per box

5/8"

Baluster Collar
Fits over 5/8" square
2" W x 2" H

ITEM#
CI68358

3/4"

Baluster Collar
Fits over 3/4" square
2" W x 2" H

ITEM#
CI68334

45 pcs per box

1"

Baluster Collar
Fits over 1" square
2" W x 2" H

ITEM#
CI68310

1 1/2"

Baluster Collar
Fits over 1-1/2" square
2-3/4" W x 2-3/4" H

ITEM #
CI683112XL



CAST IRON

1/2"

CAST IRON

Fits 1/2" Square
1 7/8" W
1 3/4" H



ITEM#
CI7035

1/2"

CAST IRON

Baluster collar
Fits 1/2" sq.
4" H
2"W



ITEM#
CI7924

1/2"

CAST IRON

Fits 1/2" sq.
1 1/8" W
1 7/8" H



ITEM#
CI8527

1/2"

CAST IRON

Fits 1/2" sq.
1 1/4" W
1 1/2" H



ITEM#
CI8521

Two pieces
Top in one piece

Entire item will fit over 4" pipe



9" W x 6-1/2" H
ID 4-1/2"
23 lbs.

ITEM#
CI6009

28-1/4" H
10-1/2" Base Dia.
ID 4-1/2"
105 lbs.

ITEM#
CI6008

* 2 Half sections
You weld



3.31 lbs.

ITEM#
CI998P

Cast in one piece



27" H x 2-1/2"
6" Base Dia.
Cast iron 32 lbs.

ITEM#
CI999P

RAPHAEL



Bottom in one piece

5" Octagonal Base
47-1/2" H 51 lbs.

ITEM#
CI9115X

VICTORIAN



Bottom in one piece

4-1/2" Sq. Base
47" H 65 lbs.

ITEM#
CI9113X

Actual dimensions may vary slightly due to variations in manufacturer's production.

1/2"



Cover Shoe

1/2" hole
5/8" tall
1-5/8" Sq.. Base

ITEM#
CICC

1/2"



1/2" Shoe

Extra tall.
H 1 5/16"
for 1/2" square.

ITEM#
CISS

1/2"

1/2" flanged,
3/4" deep.

5/8"

5/8" sq.
Collar 1" Deep
Base 1 3/8"
x 2 9/16"

3/4"

Fits over 3/4" sq.
Collar 1" Deep
Base 1 1/2" x 3"

1"

Straight inside wall.
For 1" sq. tubing,
1 1/2" H



Shoes have 1/2" x 3/16" tapered mounting holes.

ITEM#
CIEE

ITEM#
CIEE58

ITEM#
CI9534

ITEM#
CIMM

1/2"



2 1/2" Sq.
Fits 1/2" sq..

ITEM#
CI712

1/2"



1" x 1 1/2" W
Fits 1/2" Square

ITEM#
CI685P

1/2"

1" H x 1 1/2" W
Fits 1/2" Square

ITEM#
CI7050

9/16"

1" H x 1 1/2" W
Fits 9/16" Square

ITEM#
CI7055916

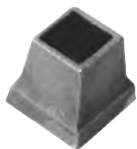
1"



1 3/16" H x 2" W
Fits 1" Square

ITEM#
CI2511

1"



Slip On Shoe

1" x 1 7/8" deep
for 1" sq..

ITEM#
CIDD

1"



Fits 1" Square

ITEM#
CI7040

1"



1" Shoe

Straight I.W. for 1" tubing.
One ear, 1 3/8" deep.

ITEM#
CILL

1 1/4"



Flange Shoe

Tapered I.W. 1-5/16" tall
3-3/4" x 2-9/16" base.
For 1-1/4" sq.. tubing.

ITEM#
CIRR

1 x 1/2"

For 1" Channel

Height 7/8" width 1 3/8".
Fits 1" x 1/2"



ITEM#
CI653

1 1/2"

For 1-1/2" Tubing

Collar 2" deep
3 3/4" x 3 3/4"



ITEM#
CIHH



13-1/2" H x 6-5/8" W
Fits 1/2" pickets
1.8 lbs

ITEM#
CI12



◆
Diamond
Shaped
Full Bodied

12-1/2" H x 6-1/2" W
Fits 1/2" pickets
2.25 lbs

ITEM#
CI146

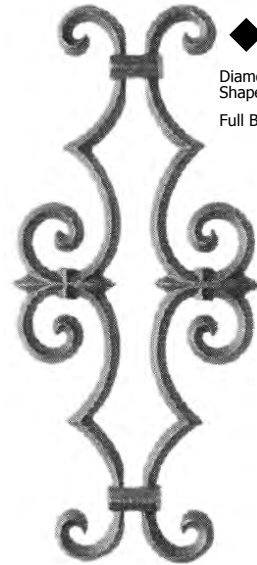


17-1/2" H x 8" W
Fits 1/2" pickets
2.5 lbs

ITEM#
CI2

Also available in 3/4"
Fits 3/4" pickets
2.04 lbs

ITEM#
CI641XLF



◆
Diamond
Shaped
Full Bodied

18" H x 8-1/2" W
Fits 1/2" pickets
4.0 lbs

ITEM#
CI147



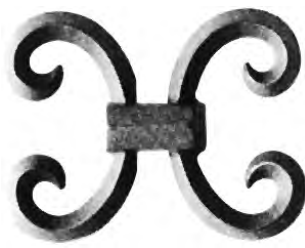
3-3/4" W
3-3/4" H
Fits 1/2" pickets
.5 lbs

ITEM#
CI10A



4" W
3-3/4" H
Fits 3/4" pickets
.6 lbs

ITEM#
CI10A34



4" H x 5-1/4" W
Fits 1/2" pickets
1.0 lbs

ITEM#
CI147XS

◆
Diamond
Shaped
Full Bodied



4" H x 5-1/4" W
.64 lbs

ITEM#
CI907

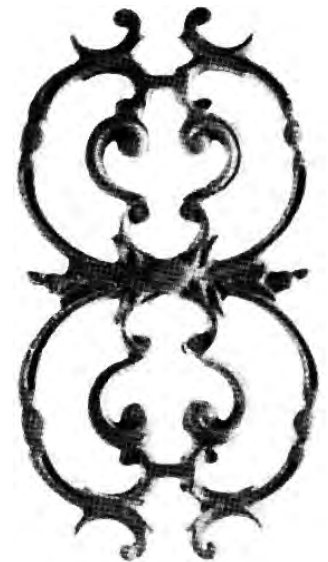


7-1/2" W x 13-1/2" H
2.3 lbs

ITEM#
CI3

Also available for 3/4" pickets
1.8 lbs

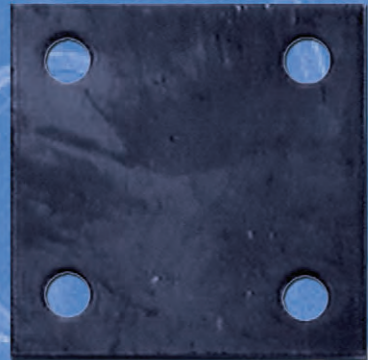
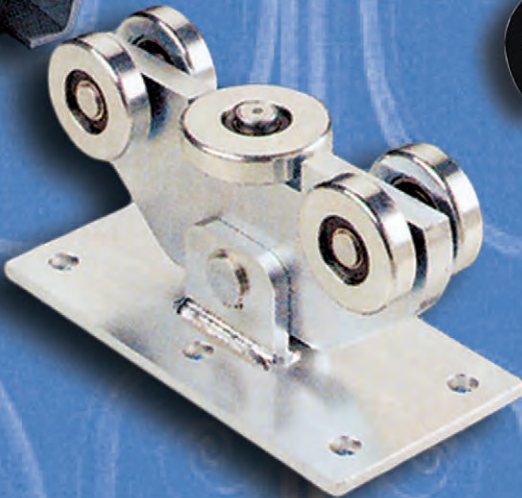
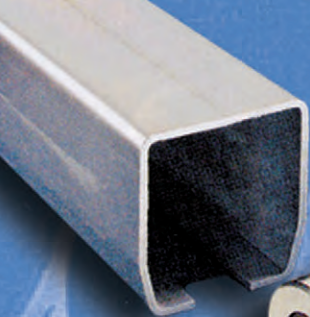
ITEM#
CI334



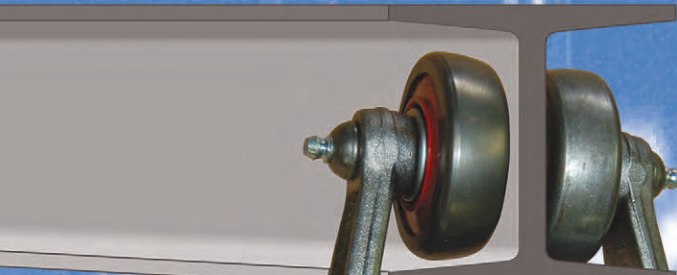
15-1/2" H x 8-1/4" W
Fits 1/2" pickets
6 lbs.

ITEM#
CI60X

Castings are usually Double Faced unless otherwise specified.



indital usa





indital usa